

**HOWARD ROAD TO SAN MIGUEL
345KV PROJECT**

**PRELIMINARY ALTERNATIVE
SEGMENTS WITH
ENVIRONMENTAL CONSTRAINTS**

Legend

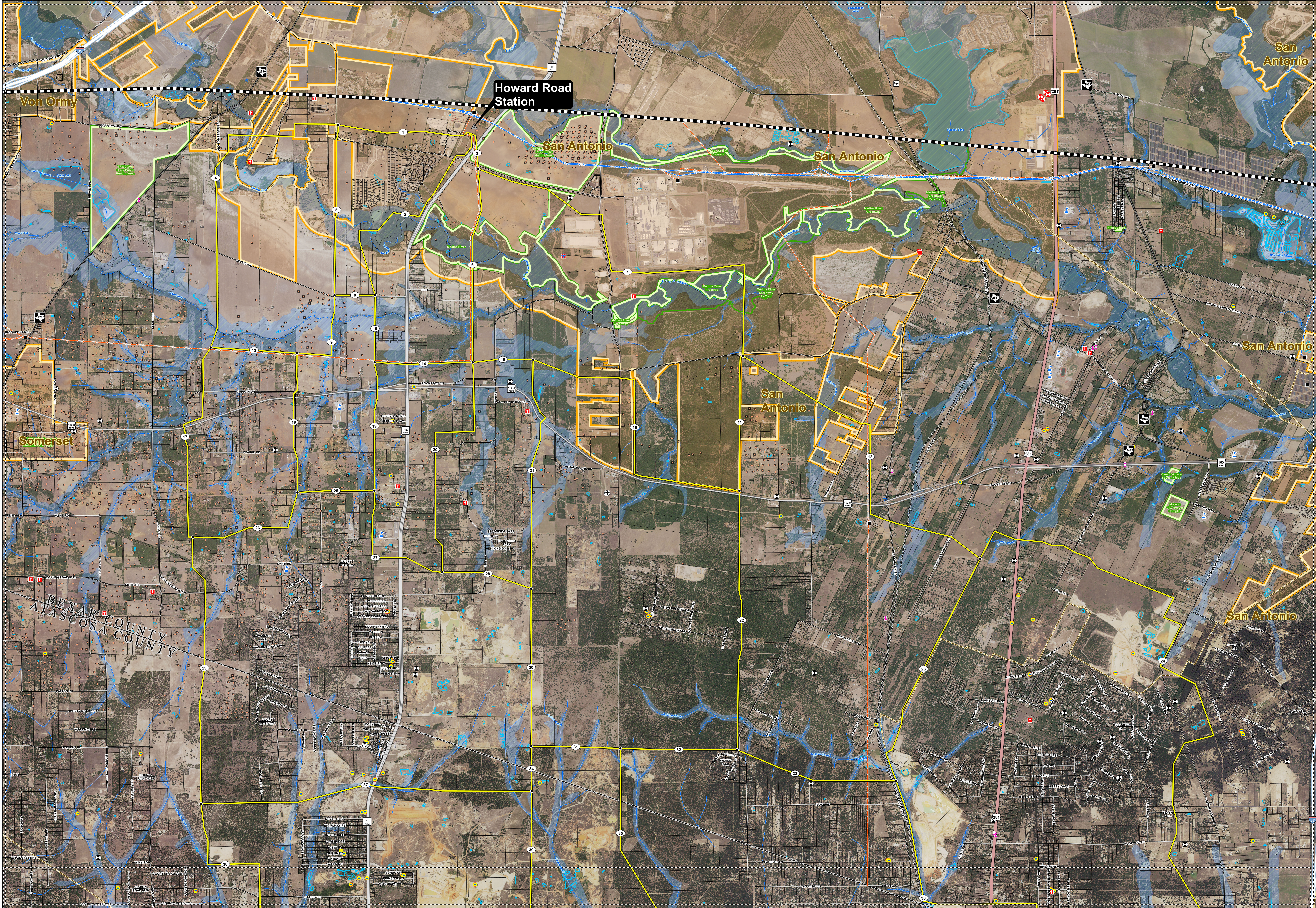
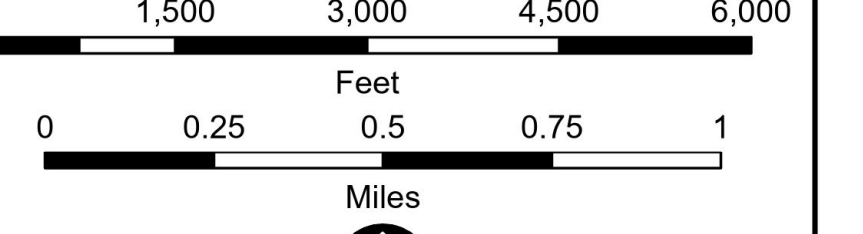
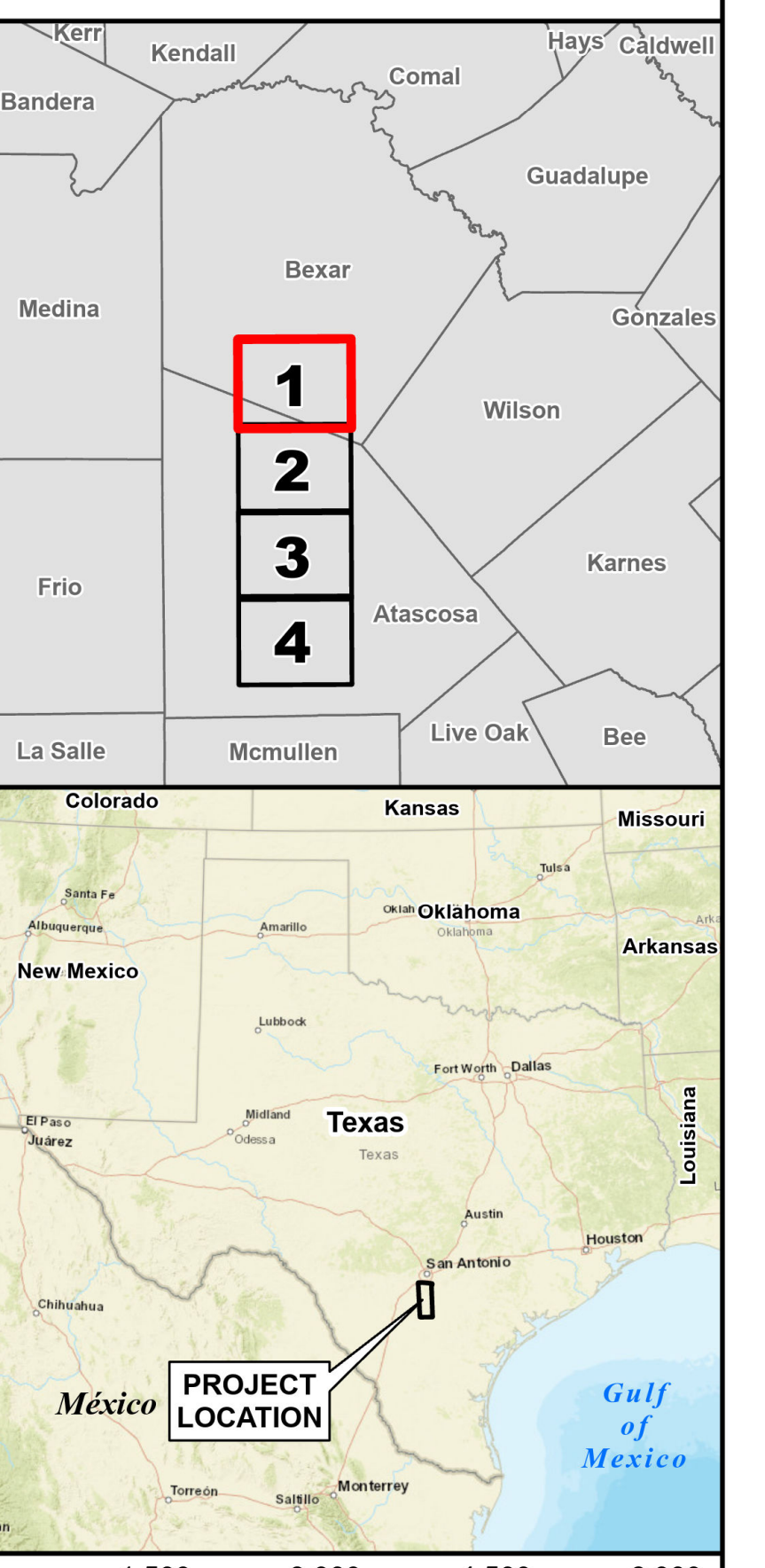
- Project Components**
- Proposed Station Location
 - Preliminary Alternative Segment, Node, and Label
 - Study Area Boundary
 - Page Match Line
- Existing Utility Features**
- Existing Substation
 - 69-kV Transmission Line
 - 138-kV Transmission Line
 - 345-kV Transmission Line
- Landuse Features**
- AM Communication Tower
 - FM or Other Communication Tower
 - National Register of Historic Places
 - School
 - Church
 - Cemetery
 - Water Well
 - Oil / Gas Well
 - Oil / Gas Pipeline
 - Mechanical Irrigation
 - Park
- Transportation Features**
- Interstate Highway
 - U.S. Highway
 - State Highway
 - Farm to Market Road
 - Local Road
 - Railroad
 - Private Airport
 - Public Airport
 - Heliprot
- River or Stream**
- River or Stream
 - Lake or Pond
 - FEMA 100 Year Flood Zone
- Parcel Boundary**
- Parcel Boundary
 - City Limits
 - County Boundary

1

Note: Certain cultural resource data are not shown on this map as these data are not to be reproduced, distributed, or released to the public. Some data layers including property boundaries, pipelines, railroads, and oil/gas well sites obtained from third party sources are inaccurate for cartographic purposes. These data have not been corrected and should be used as a general guide to feature locations only. Digitization of final preliminary transmission line segments was performed based on aerial interpretation of these features.

*Only operating pipelines displayed

Some legend symbols are enlarged for easier identification.
Base Map: Google Imagery 2023



**HOWARD ROAD TO SAN MIGUEL
345KV PROJECT**

**PRELIMINARY ALTERNATIVE
SEGMENTS WITH
ENVIRONMENTAL CONSTRAINTS**

Legend

Project Components

- Proposed Station Location
- Preliminary Alternative Segment, Node, and Label
- Study Area Boundary
- Page Match Line

Existing Utility Features

- Existing Substation
- 69-kV Transmission Line
- 138-kV Transmission Line
- 345-kV Transmission Line

Landuse Features

- AM Communication Tower
- FM or Other Communication Tower
- National Register of Historic Places
- School
- Church
- Cemetery
- Water Well
- Oil / Gas Well
- Oil / Gas Pipeline
- Mechanical Irrigation
- Park

Transportation Features

- Interstate Highway
- U.S. Highway
- State Highway
- Farm to Market Road
- Local Road
- Railroad
- Private Airport
- Public Airport
- Helipoint

River or Stream

- River or Stream
- Lake or Pond
- FEMA 100 Year Flood Zone

Parcel Boundary

- Parcel Boundary
- City Limits
- County Boundary

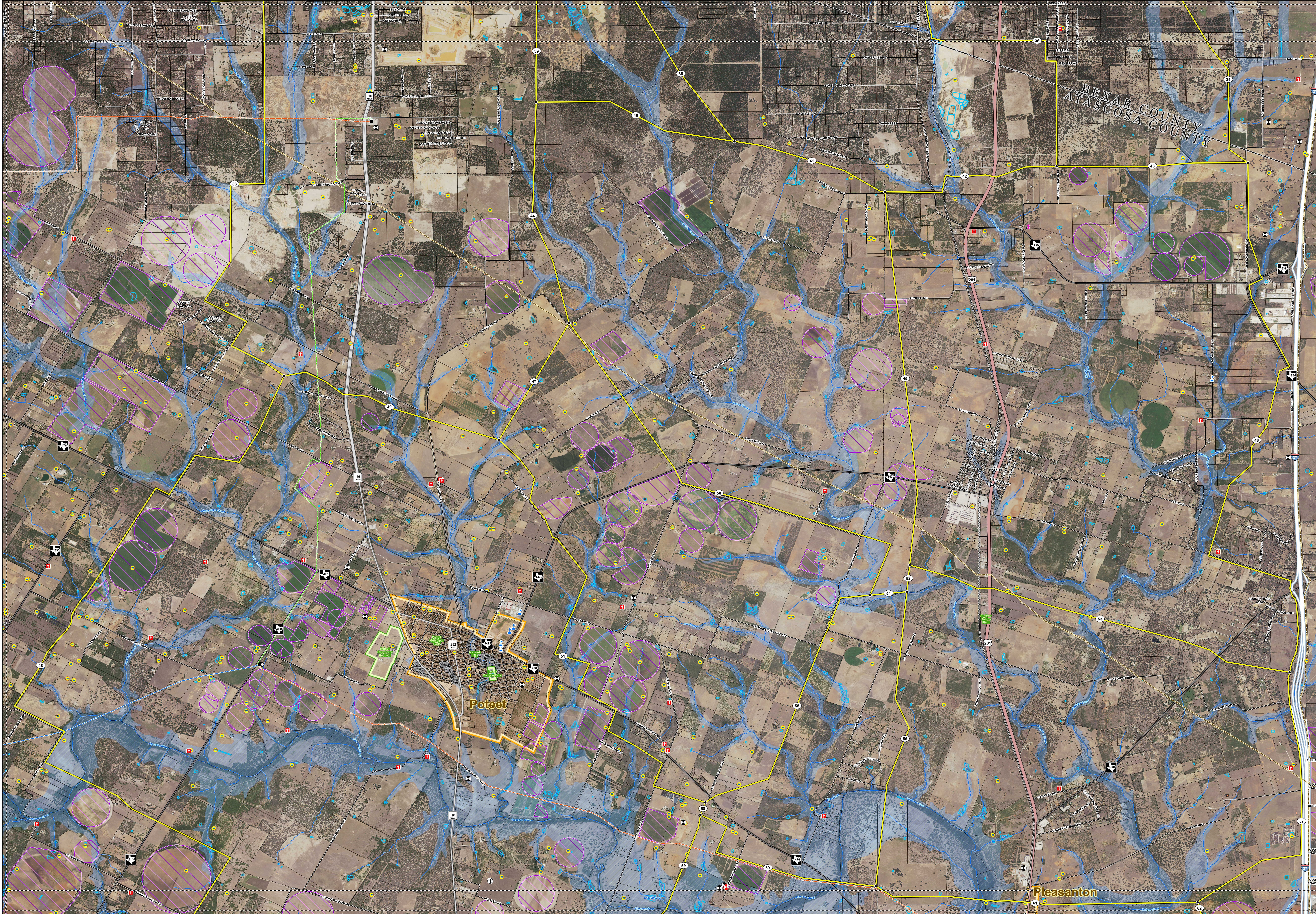
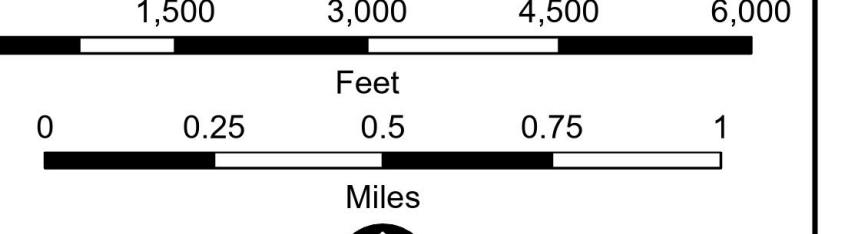
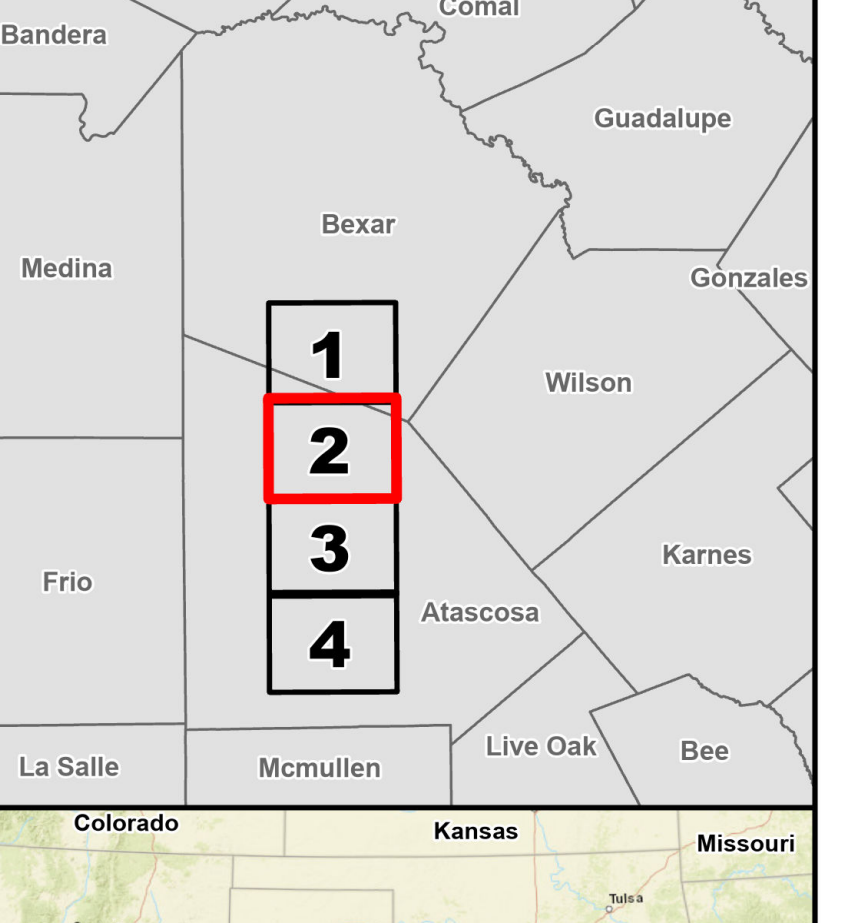
2

Note: Cemetery cultural resource data are not shown on this map. These data are not to be reproduced, distributed, or released to the public. Some data layers including property boundaries, pipelines, railroads, and oil/gas well sites obtained from third party sources are inaccurate to varying degrees. These data have not been corrected and should be used as a general guide to feature locations only. Digitization of final preliminary transmission line segments was performed based on aerial interpretation of these features.

*Only operating pipelines displayed

Some legend symbols are enlarged for easier identification.
Base Map: Google Imagery 2023

PAGE 2 OF 4



**HOWARD ROAD TO SAN MIGUEL
345KV PROJECT**

**PRELIMINARY ALTERNATIVE
SEGMENTS WITH
ENVIRONMENTAL CONSTRAINTS**

Legend

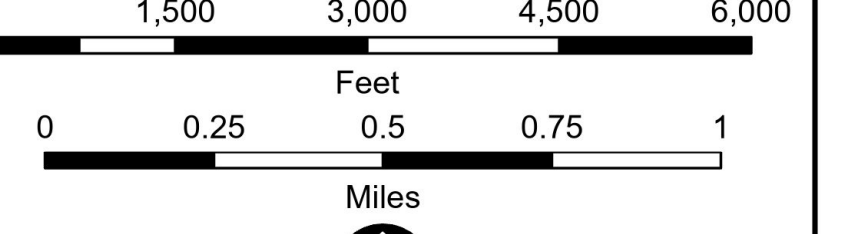
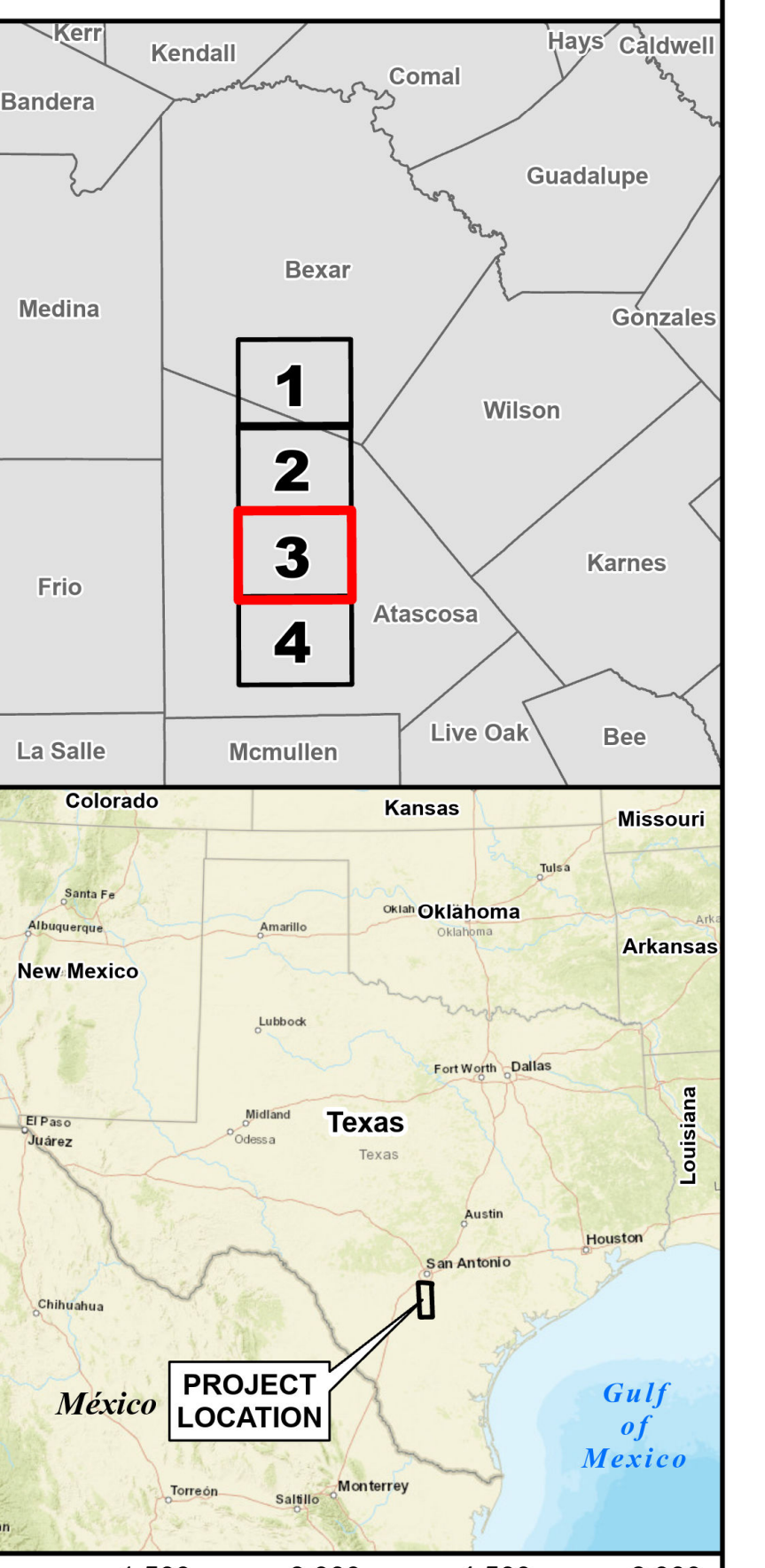
- Project Components**
- Proposed Station Location
 - Preliminary Alternative Segment, Node, and Label
 - Study Area Boundary
 - Page Match Line
- Existing Utility Features**
- Existing Substation
 - 69-kV Transmission Line
 - 138-kV Transmission Line
 - 345-kV Transmission Line
- Landuse Features**
- AM Communication Tower
 - FM or Other Communication Tower
 - National Register of Historic Places
 - School
 - Church
 - Cemetery
 - Water Well
 - Oil / Gas Well
 - Oil / Gas Pipeline
 - Mechanical Irrigation
 - Park
- Transportation Features**
- Interstate Highway
 - U.S. Highway
 - State Highway
 - Farm to Market Road
 - Local Road
 - Railroad
 - Private Airport
 - Public Airport
 - Helipad
- River or Stream**
- River or Stream
 - Lake or Pond
 - FEMA 100 Year Flood Zone
- Parcel Boundary**
- Parcel Boundary
 - City Limits
 - County Boundary

3

Note: Smaller cultural resource data are not shown on this map. Some data layers including property boundaries, pipelines, railroads, and oil/gas well sites obtained from third party sources are inaccurate for cartographic purposes. These data have not been corrected and should be used as a general guide to feature locations only. Digitization of final preliminary transmission line segments was performed based on aerial interpretation of these features.

*Only operating pipelines displayed

Some legend symbols are enlarged for easier identification. Base Map: Google Imagery 2023



**HOWARD ROAD TO SAN MIGUEL
345KV PROJECT**

**PRELIMINARY ALTERNATIVE
SEGMENTS WITH
ENVIRONMENTAL CONSTRAINTS**

Legend

- Project Components**
- Proposed Station Location
 - Preliminary Alternative Segment, Node, and Label
 - Study Area Boundary
 - Page Match Line
- Existing Utility Features**
- Existing Substation
 - 69-kV Transmission Line
 - 138-kV Transmission Line
 - 345-kV Transmission Line
- Landuse Features**
- AM Communication Tower
 - FM or Other Communication Tower
 - National Register of Historic Places
 - School
 - Church
 - Cemetery
 - Water Well
 - Oil / Gas Well
 - Oil / Gas Pipeline
 - Mechanical Irrigation
 - Park
- Transportation Features**
- Interstate Highway
 - U.S. Highway
 - State Highway
 - Farm to Market Road
 - Local Road
 - Railroad
 - Private Airport
 - Public Airport
 - Helipoint
- River or Stream**
- River or Stream
 - Lake or Pond
 - FEMA 100 Year Flood Zone
- Parcel Boundary**
- Parcel Boundary
 - City Limits
 - County Boundary

4

Note: Sensitive cultural resource data are not shown on this map as these data are not to be reproduced, distributed, or released to the public. Some data items including property boundaries, pipelines, railroads, and oil/gas well sites obtained from third party sources are indicated by varying degrees. These data have not been corrected and should be used as a general guide to feature locations only. Distribution of final preliminary transmission line segments was performed based on aerial interpretation of these features.

*Only operating pipelines displayed

Some legend symbols are enlarged for easier identification. Base Map: Google Imagery 2023

PAGE 4 OF 4

