

## Who are CPS Energy and STEC?

Established in 1860, CPS Energy is the nation's largest community-owned provider of electric and natural gas services. We provide safe, reliable, and competitively priced services to **930,114** electric and **381,379** natural gas customers in San Antonio and portions of seven adjoining counties. Our customers' combined energy bills rank among the lowest of the nation's 20 largest cities while generating \$9 billion in revenue for the City of San Antonio over the last 80 years.

Our Vision 2027 strategic plan is designed to guide CPS Energy through rapid transformational change in our city. As a trusted and reliable community partner, we continuously focus on job creation, economic development, and educational investment. We are powered by our skilled workforce, whose commitment to the community is demonstrated through our employees' volunteerism, our community engagement efforts and programs aimed at bringing value and assistance to our customers.

## South Texas Electric Cooperative (STEC)

STEC's mission is to provide the infrastructure and services to deliver reliable and economical electric power to its diversified membership. As a cutting-edge Generation and Transmission Cooperative STEC leads by providing a diverse portfolio of affordable energy from a variety of energy sources, including wind, solar, lignite, natural gas, diesel fuel, and hydroelectric. STEC was established in 1944 to provide wholesale transmission and generation services to its Member distribution cooperatives. Through 2,278 miles of transmission lines and 220 substations, STEC serves its nine distribution cooperatives which in turn serve 346,000 memberowners in forty-seven South Texas counties. For more information about STEC, please visit [stec.org](http://stec.org).

## How can you follow the progress of this project?

The CPS Energy project team will post project information on the CPS Energy website at [cpsenergy.com/infrastructure](http://cpsenergy.com/infrastructure).

## Who can answer your questions?

The website will include regular updates on the project as steps are completed. Also, you may write, call or email to:

### CPS Energy

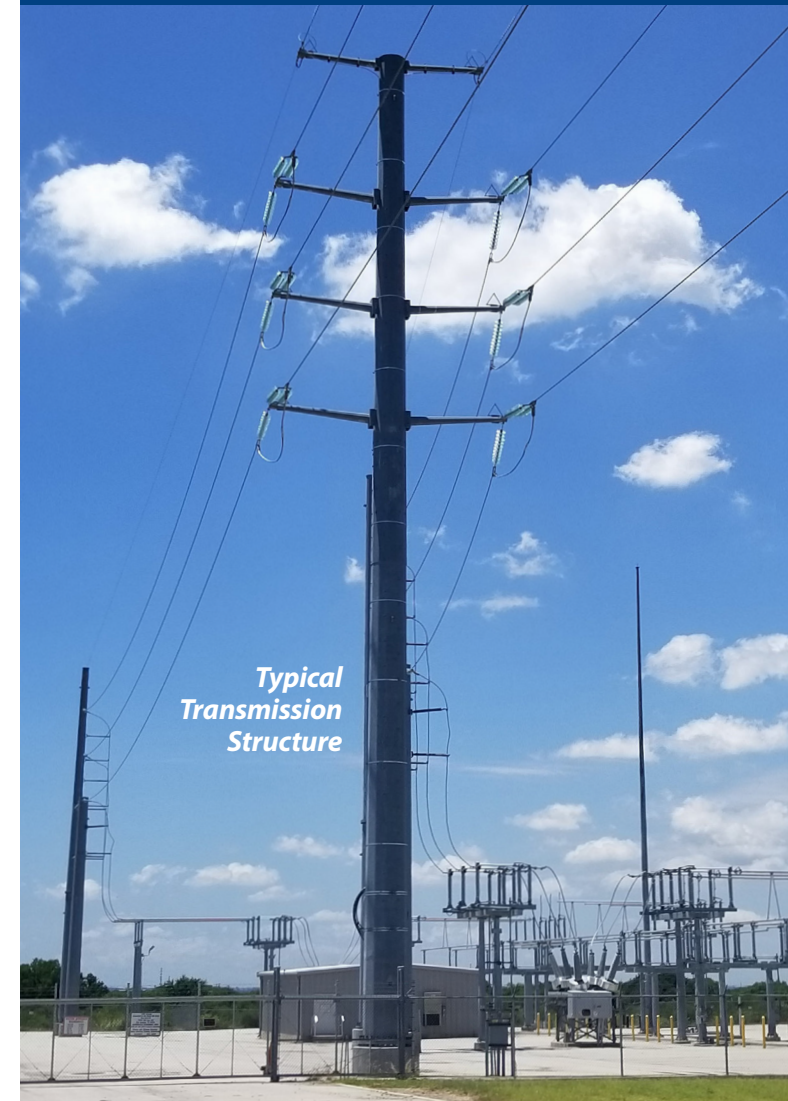
Antonio Demendonca, Project Manager  
Howard Road to San Miguel  
Transmission Line Project  
Mail Code RT0801  
500 McCullough Ave.  
San Antonio, Texas 78215  
(210) 353-2018  
[Howard-SanMiguelProject@cpsenergy.com](mailto:Howard-SanMiguelProject@cpsenergy.com)

### STEC

Arthur H. (Holly) Gifford  
Transmission Project Coordinator  
P.O. Box 119  
Nursery, Texas 77976  
(361) 485-6134



# HOWARD ROAD TO SAN MIGUEL TRANSMISSION LINE PROJECT



*Typical  
Transmission  
Structure*

# INFORMATION ABOUT THE HOWARD ROAD TO SAN MIGUEL TRANSMISSION LINE PROJECT

## What is the Howard Road to San Miguel Transmission Line Project?

CPS Energy and South Texas Electric Cooperative (STEC) are proposing to construct approximately 50 miles of new transmission infrastructure extending from Bexar County to Atascosa County. Transmission lines consist of specially designed structures composed of various material (wood, concrete, steel, etc.) and wires that move electricity long distances at high voltages from station to station.

### How might this project affect you?

CPS Energy and STEC are evaluating multiple geographically diverse transmission line options for the project. Your input and feedback are important to our evaluation of alternatives.

### Why is this project needed?

The new transmission line will increase the resiliency and reliability of Texas' electric grid by adding another transmission pathway while also adding support to the accelerating load growth south of San Antonio.

## Study Area Map

