

Who is CPS Energy?

Established in 1860, CPS Energy is the nation's largest community-owned provider of electric and natural gas services. We provide safe, reliable, and competitively priced services to **930,114** electric and **381,379** natural gas customers in San Antonio and portions of seven adjoining counties. Our customers' combined energy bills rank among the lowest of the nation's 20 largest cities while generating \$9 billion in revenue for the City of San Antonio over the last 80 years.

Our Vision 2027 strategic plan is designed to guide CPS Energy through rapid transformational change in our city. As a trusted and reliable community partner, we continuously focus on job creation, economic development, and educational investment. We are powered by our skilled workforce, whose commitment to the community is demonstrated through our employees' volunteerism, our community engagement efforts and programs aimed at bringing value and assistance to our customers.

For more information, visit cpsenergy.com.



How can you follow the progress of this project?

The CPS Energy project team will post project information on the CPS Energy website at cpsenergy.com/infrastructure.

Who can answer your questions?

The website will include regular updates on the project as steps are completed.

Also, you may write, call or email to:

CPS Energy

Andres Salgado Alamo, Project Manager

Howard Rd. to Leon Creek

Transmission Line Project

Mail Code RT0801

500 McCullough Ave.

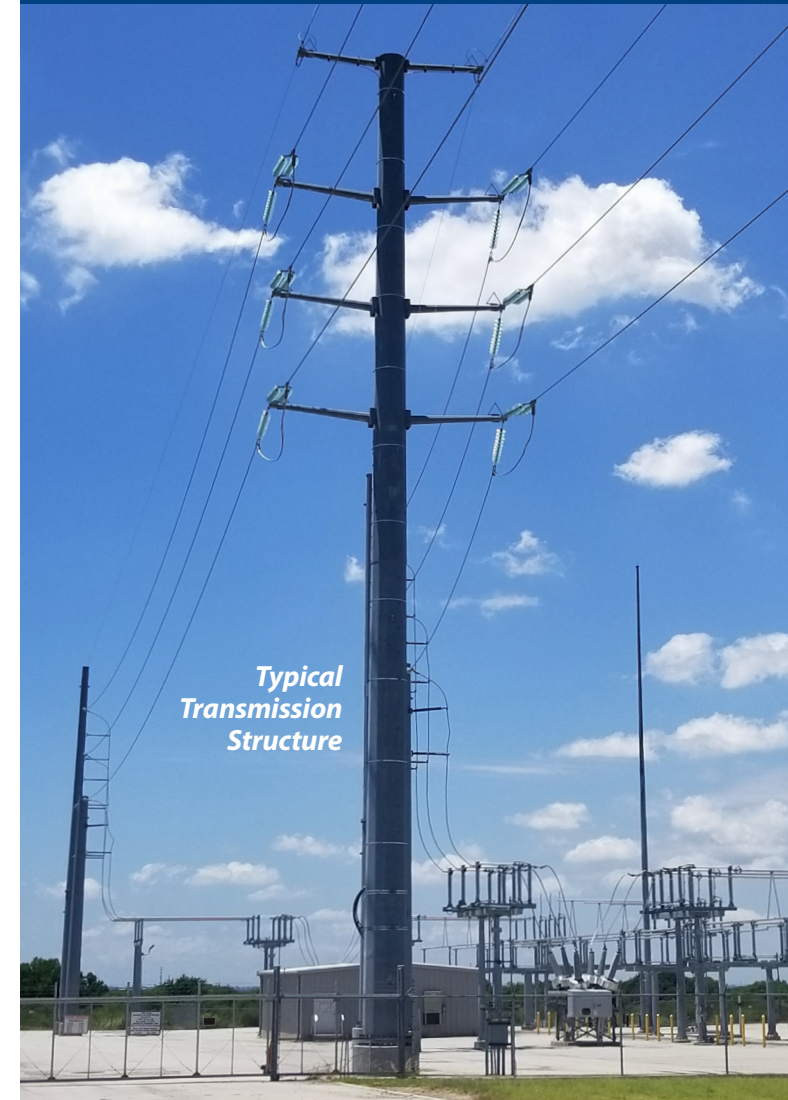
San Antonio, Texas 78215

(210) 353-6674

Howard-LeonProject@cpsenergy.com



HOWARD ROAD TO LEON CREEK TRANSMISSION LINE PROJECT



INFORMATION ABOUT THE HOWARD ROAD TO LEON CREEK TRANSMISSION PROJECT

What is the Howard Road to Leon Creek Transmission Project?

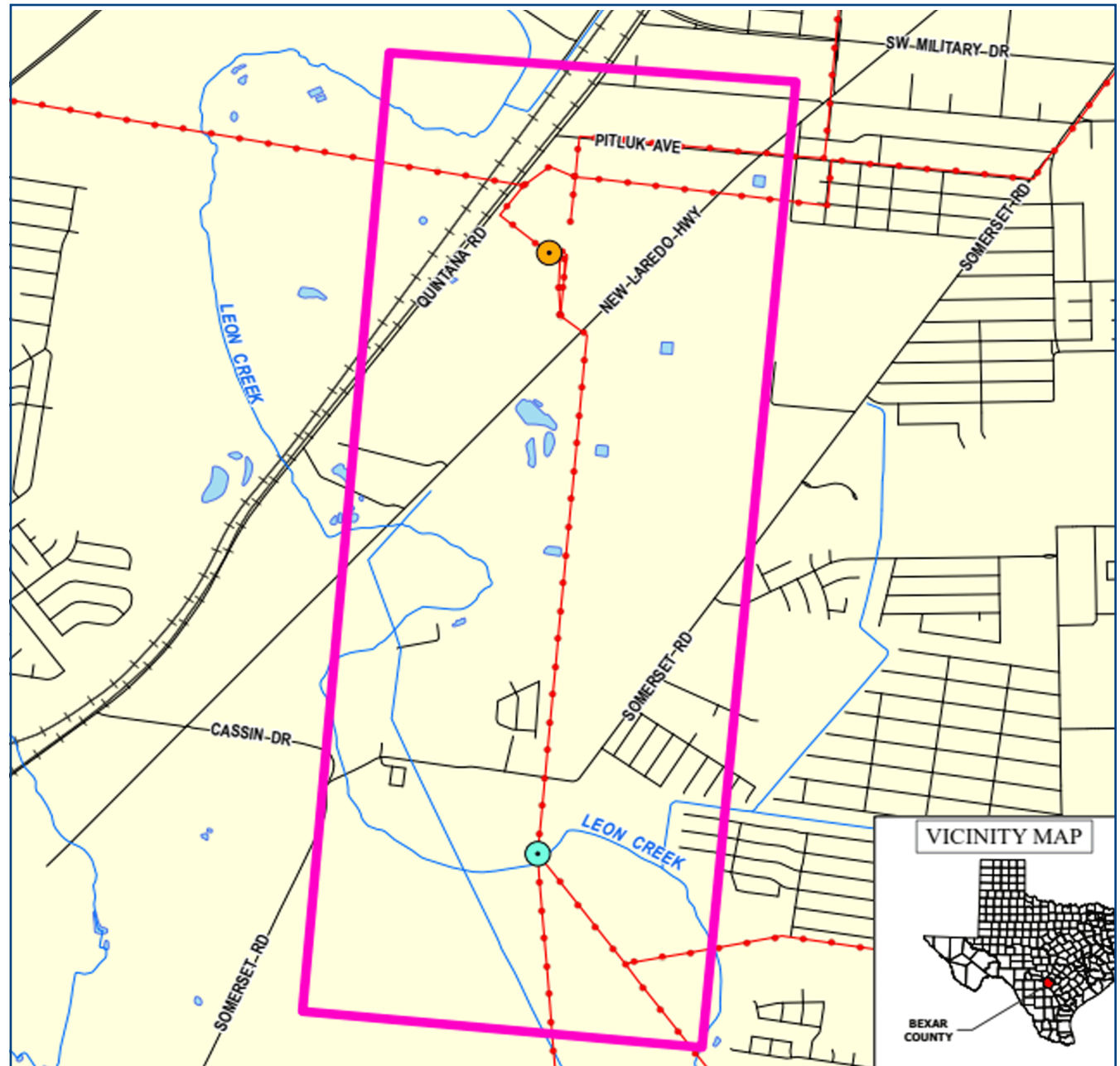
CPS Energy is proposing to rebuild approximately 1.8 miles of 138kV transmission from the Leon Creek Substation to the Howard Road Substation. Transmission lines consist of specially designed structures composed of various material (wood, concrete, steel, etc.) and wires that move electricity long distances at high voltages from station to station.

How might this project affect you?

CPS Energy is evaluating multiple geographically diverse transmission line options for the project. Your input and feedback are important to our evaluation of alternatives.

Why is this project needed?

The new transmission line is needed to increase the resiliency and reliability of Texas' electric grid by adding another transmission pathway to increase support of the accelerating load growth south of San Antonio.



Study Area Map