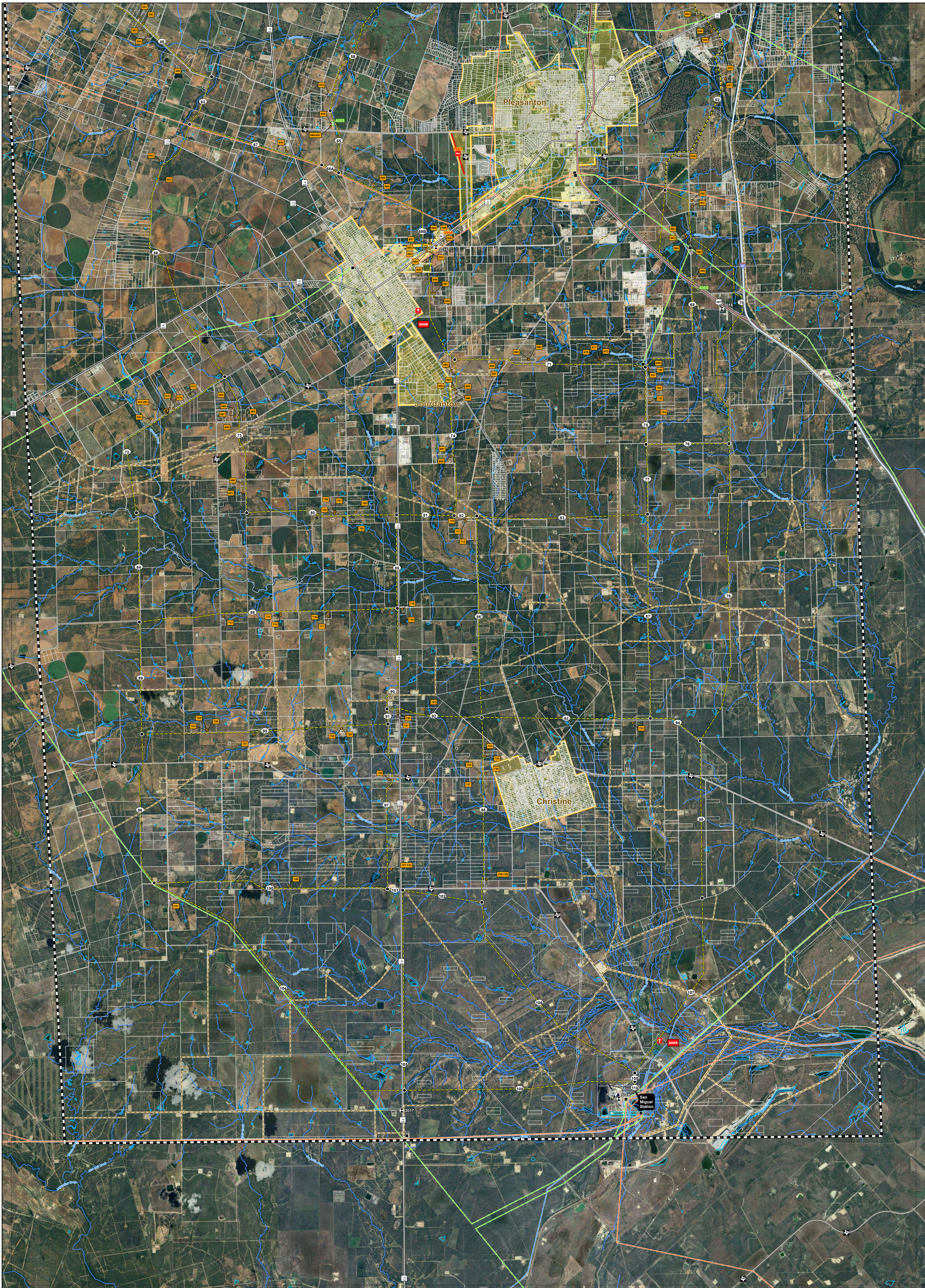


<p>Legend</p> <p>Project Components</p> <ul style="list-style-type: none"> Proposed Station Location Primary Alternative Segment, Label & Node Study Area Boundary Sheet Match Line 	<p>Existing Utility Features</p> <ul style="list-style-type: none"> Existing Substation 69-kV Transmission Line 138-kV Transmission Line 345-kV Transmission Line Oil / Gas Pipeline (6 inches and above) 	<p>Landuse Features</p> <ul style="list-style-type: none"> Habitable Structure & Map ID AM Communication Tower & Map ID PH, Other or Microwave Communication Tower & Map ID Cemetery & Map ID NRHP & Map ID Park & Map ID 	<p>Transportation Features</p> <ul style="list-style-type: none"> Interstate Highway US Highway State Highway Farm-to-Market Road Railroad Private Airport, Runways, & Map ID 	<p>Hydrologic Features</p> <ul style="list-style-type: none"> River / Stream Lake / Pond <p>Administrative Features</p> <ul style="list-style-type: none"> Parcel Boundary City Limits County Boundary 	<p>Note: Sensitive cultural resource data are not shown on this as these data are not to be reproduced, distributed, or released to the public. Some data layers including property boundaries, pipelines, railroads, and other well lines obtained from third party sources are inaccurate to varying degrees. These data have not been corrected and should be used as a general guide to feature locations only. Digitization of initial preliminary transmission line segments was performed based on aerial interpretation of these features.</p> <p>*Only operating pipelines displayed.</p> <p>Once an alternative route is selected and approved by the Commission, the represented corridor is subject to modification after access has been granted on the ground surveys have been completed to identify unknown constraints or the extent of know constraints.</p> <p>Some legend symbols are enlarged for easier identification. Base Map: Google Imagery 2022</p>		<p>Howard Road to San Miguel 345 kV Transmission Line Project</p> <p>FIGURE 4-1 HABITABLE STRUCTURES AND LAND USE FEATURES IN THE VICINITY OF THE PRIMARY ALTERNATIVE ROUTES</p> <p>0 1 Miles</p> <p> </p> <p>Date: 10/1/2024</p>
---	---	--	--	---	---	--	--



Legend	Existing Utility Features	Landuse Features	Transportation Features	Hydrologic Features	Administrative Features
Proposed Station Location	Existing Substation	Habitable Structure & Map ID	Interstate Highway	River / Stream	Parcel Boundary
Primary Alternative Segment, Label & Node	69-kV Transmission Line	AM Communication Tower & Map ID	US Highway	Lake / Pond	City Limits
Study Area Boundary	138-kV Transmission Line	PH, OTH or Microwave Communication Tower & Map ID	State Highway	Farm-to-Market Road	County Boundary
Sheet Match Line	345-kV Transmission Line	Cemetery & Map ID	Railroad	Public Airport, Runway, & Map ID	
	Oil / Gas Pipeline (6 inches and above)	NRHP & Map ID	Liveport & Map ID	Park & Map ID	

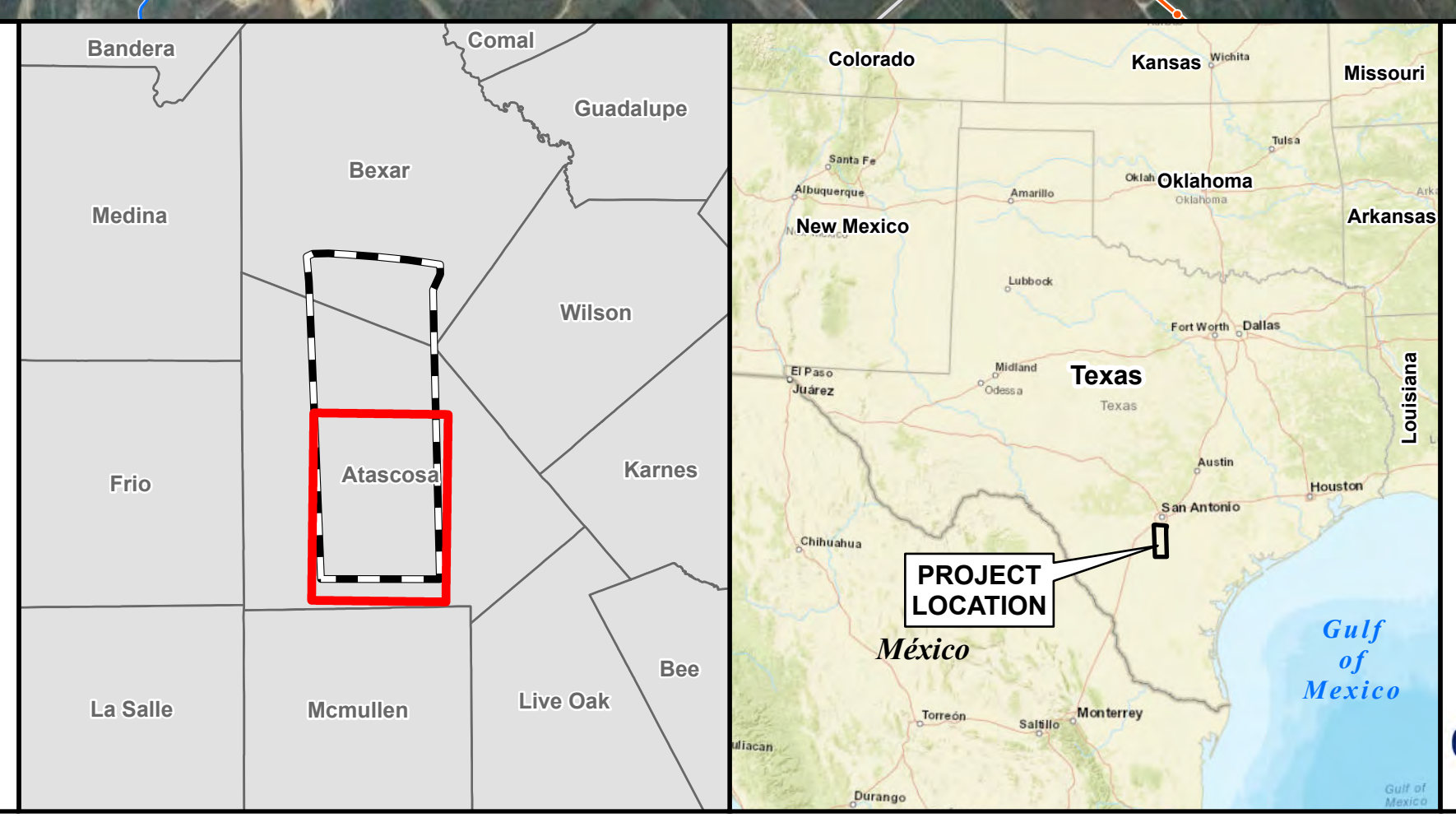
Note: Sensitive cultural resource data are not shown on this as these data are not to be reproduced, distributed, or released to the public.

Some data layers including property boundaries, pipelines, railroads, and other well sites obtained from third party sources are inaccurate to varying degrees. These data have not been corrected and should be used as a general guide to feature locations only. Digitization of initial preliminary transmission line segments was performed based on aerial interpretation of these features.

*Only operating pipelines displayed.

Once an alternative route is selected and approved by the Commission, the represented corridor is subject to modification after access has been granted on the ground surveys have been completed to identify unknown constraints or the extent of know constraints.

Some legend symbols are enlarged for easier identification. Base Map: Google Imagery 2022



Howard Road to San Miguel 345 kV Transmission Line Project

FIGURE 4-1
HABITABLE STRUCTURES AND LAND USE FEATURES IN THE VICINITY OF THE PRIMARY ALTERNATIVE ROUTES

0 1 Miles

Date: 10/1/2024