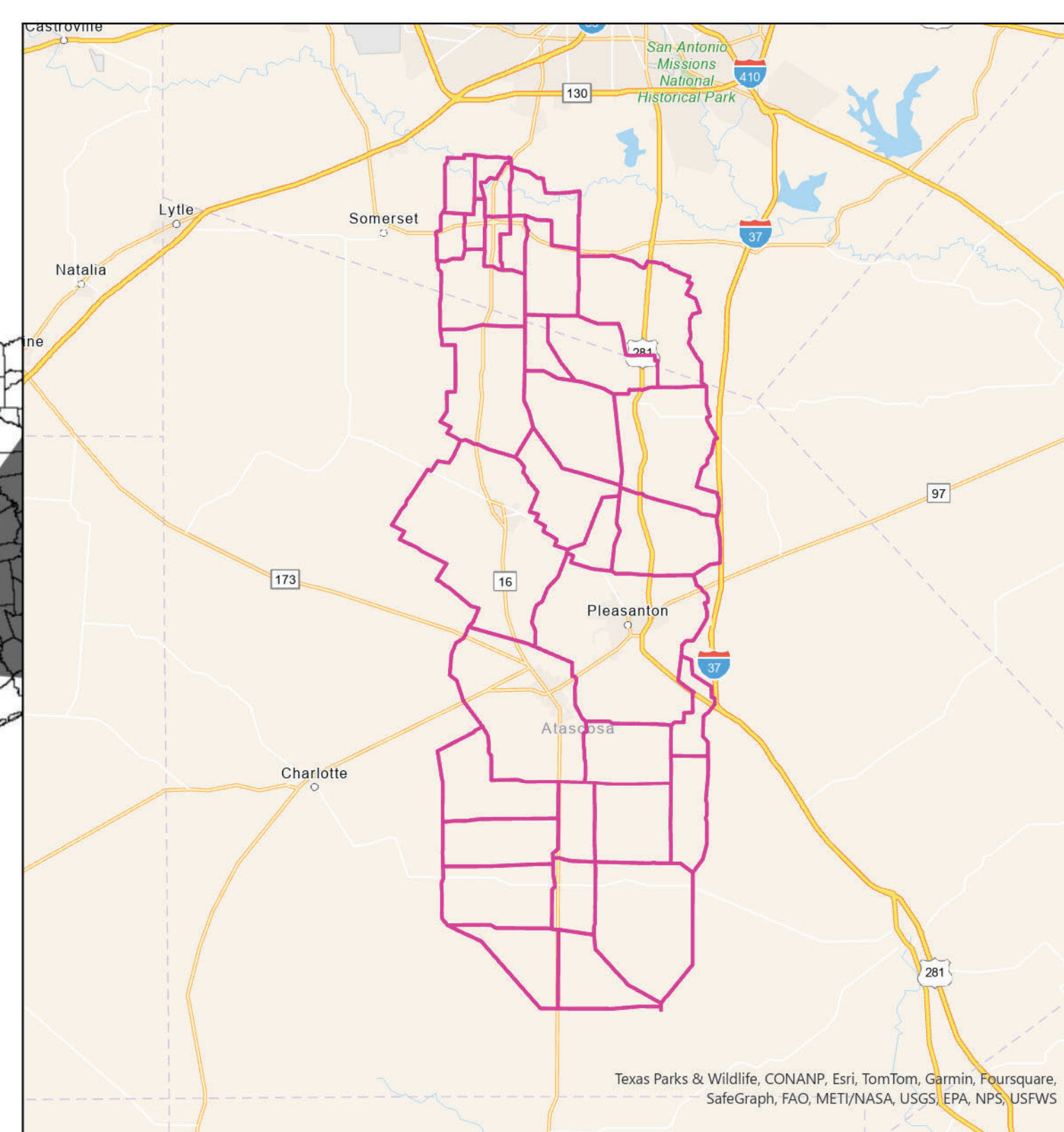
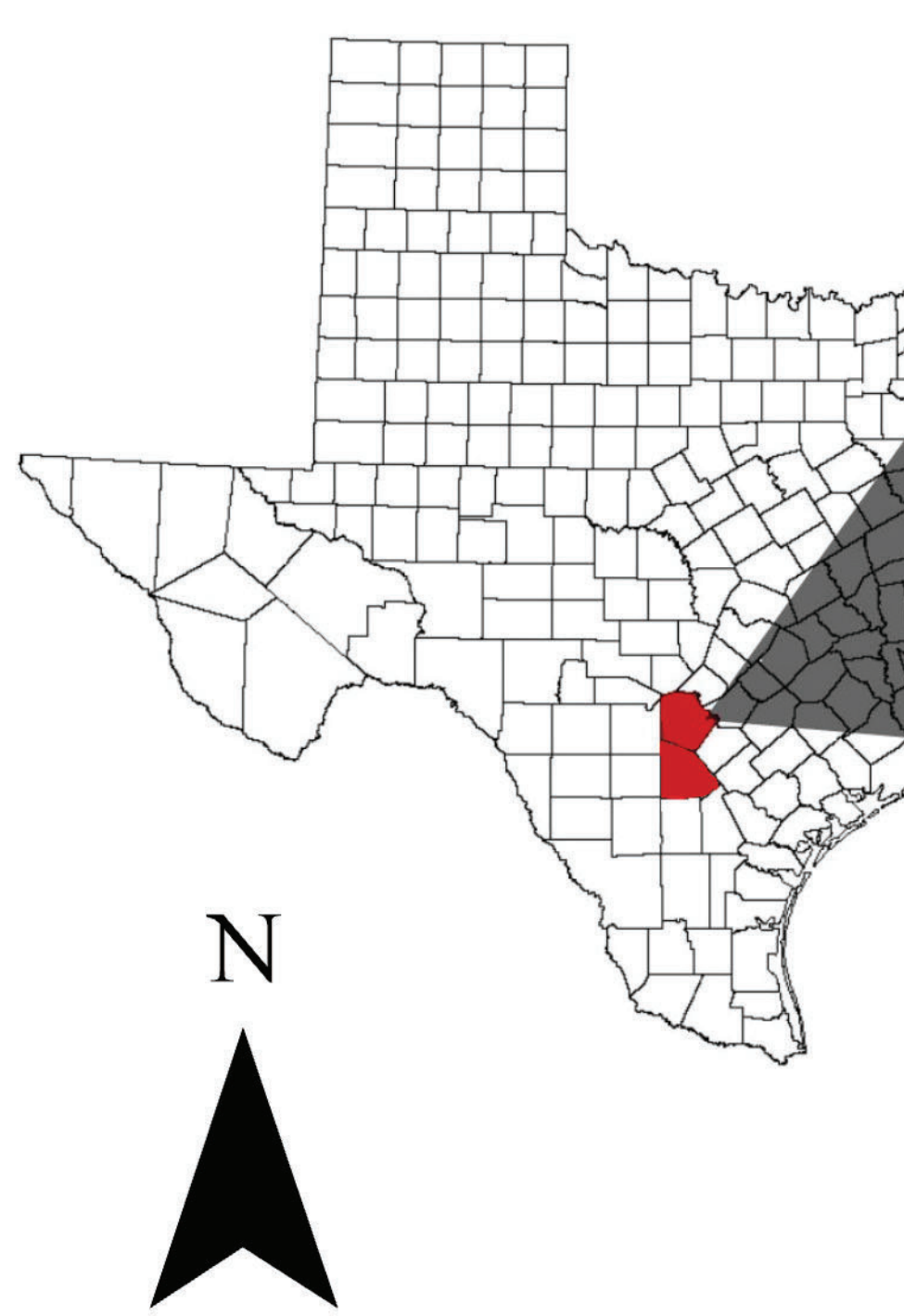
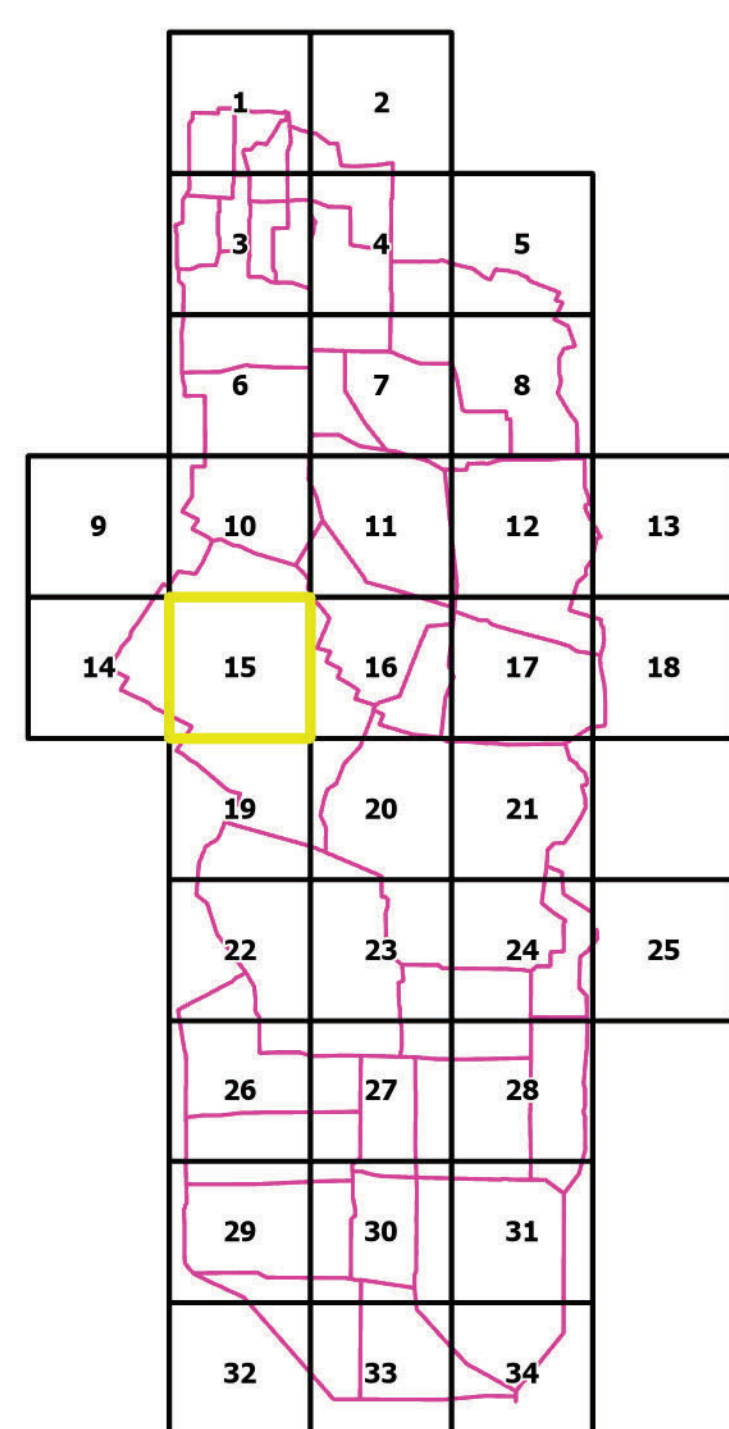




| PRIMARY ALTERNATIVE ROUTES | SEGMENT COMPOSITION   | TOTAL LENGTH IN MILES |
|----------------------------|---|-----------------------|
| A                          | 1-5-10-19-27-28-30-34-39-44-47-51-58-59-65-68B-74-82-86-88-106-108-110                | 47.77                 |
| B                          | 1-5-6-18-26-28-38-48-63-66-72-84-89-95-97-101-102-106-108-110                         | 56.67                 |
| C                          | 2-10-18-25-28-37-39-44-47-51-58-59-65-68B-74-82-86-88-106-108-110                     | 50.71                 |
| D                          | 2-10-18-25-28-38-48-63-66-72-84-89-96-100-101-102-106-108-110                         | 55.95                 |
| E                          | 2-10-18-25-28-38-48-63-66-72-84-89-96-104-108-110                                     | 55.81                 |
| F                          | 2-10-18-25-28-38-48-63-66-73-80-81-82-86-88-106-108-110                               | 53.42                 |
| G                          | 2-10-18-25-28-38-48-63-67-68A-68B-74-82-86-88-106-108-110                             | 52.23                 |
| H                          | 2-10-18-25-28-38-49-51-58-59-65-68B-74-82-86-88-106-108-110                           | 50.05                 |
| I                          | 2-10-19-27-28-30-34-39-44-50-45B-52-54-55-58-59-65-68B-71-75-77-87-94-99-107-108-110  | 51.82                 |
| J                          | 2-8-6-13-17-28-30-34-39-44-50-45B-52-54-55-58-59-65-68B-71-75-77-87-94-99-107-108-110 | 58.92                 |
| K                          | 3-6-14-19-27-28-30-31-35-41-45A-45B-52-56-61-62-70-78-99-107-108-110                  | 49.78                 |
| L                          | 3-6-15-16-22A-22B-32-35-41-45A-45B-52-54-55-58-59-65-68B-74-82-86-88-106-108-110      | 49.02                 |
| M                          | 3-6-15-21-30-31-35-41-45A-45B-52-54-55-58-59-65-68B-74-82-86-88-106-108-110           | 46.99                 |
| N                          | 3-6-15-21-30-34-39-40-41-45A-45B-52-54-55-58-59-65-68B-74-82-86-88-106-108-110        | 47.47                 |
| O                          | 3-6-15-21-30-34-39-44-47-51-58-59-65-68B-74-81-85-90-91-97-101-102-106-108-110        | 47.6                  |
| P                          | 3-6-15-21-30-34-39-44-47-51-58-59-65-68B-74-81-85-90-92-93-94-99-107-108-110          | 50.48                 |
| Q                          | 3-6-15-21-30-34-39-44-47-51-58-59-65-68B-74-82-83-87-94-99-107-108-110                | 48.23                 |
| R                          | 3-6-15-21-30-34-39-40-41-45A-45B-53-57-62-70-78-99-107-108-110                        | 45.32                 |
| S                          | 3-6-15-21-30-34-39-44-47-51-58-60-61-62-70-78-99-107-108-110                          | 49.05                 |
| T                          | 3-6-15-21-30-34-39-44-50-45B-52-56-61-62-70-78-99-107-108-110                         | 47.9                  |
| U                          | 3-6-20-28-30-34-39-40-41-45A-45B-52-56-61-62-69-75-77-87-94-99-107-108-110            | 49.15                 |
| V                          | 3-6-20-28-30-34-39-44-50-45B-53-57-62-70-78-99-107-108-110                            | 50.47                 |
| W                          | 3-6-20-28-30-31-35-41-45A-45B-53-57-62-69-75-77-87-94-99-107-108-110                  | 49.44                 |
| X                          | 3-6-20-28-30-31-35-41-45A-45B-53-57-62-70-78-99-107-108-110                           | 50.85                 |
| Y                          | 3-6-20-28-30-31-35-41-45A-45B-53-57-62-70-78-99-107-108-110                           | 48.87                 |
| Z                          | 3-6-20-28-30-34-39-40-41-45A-45B-52-56-61-62-70-78-99-107-108-110                     | 49.05                 |
| AA                         | 3-6-20-28-30-34-39-40-41-45A-45B-53-57-62-70-78-99-107-108-110                        | 49.34                 |
| AB                         | 3-6-20-28-30-34-39-44-50-45B-52-54-55-58-59-65-68B-71-75-77-87-94-99-107-108-110      | 49.88                 |
| AC                         | 3-6-20-28-30-34-39-44-50-45B-52-56-61-62-70-78-99-107-108-110                         | 48.35                 |
| AD                         | 3-6-20-28-30-34-39-44-50-45B-53-57-62-70-78-99-107-108-110                            | 48.64                 |
| AE                         | 3-7-11-22A-12-24-46-57-62-70-78-99-107-108-110  | 51.03                 |
| AF                         | 3-7-11-22A-22B-33-38-42-45A-45B-52-54-55-58-59-65-68B-74-82-86-88-106-108-110         | 50.66                 |
| AG                         | 3-7-11-22A-22B-33-38-43-46-57-62-70-78-99-107-108-110                                 | 50.64                 |
| AH                         | 1-4-17-29-38-48-63-66-72-84-89-96-104-108-110   | 56.19                 |



## HOWARD RD TO SAN MIGUEL 345KV

| PROJECT FEATURES  |                       |
|-------------------|-----------------------|
| GRID INDEX        | HABITABLE STRUCTURES  |
| NODES             | COMMERCIAL            |
| SEGMENTS          | RESIDENTIAL           |
| PARCEL BOUNDARY   | SCHOOL                |
| COUNTY BOUNDARIES | CHURCH                |
| GRID PAGE #       | HABITABLE STRUCTURE # |

