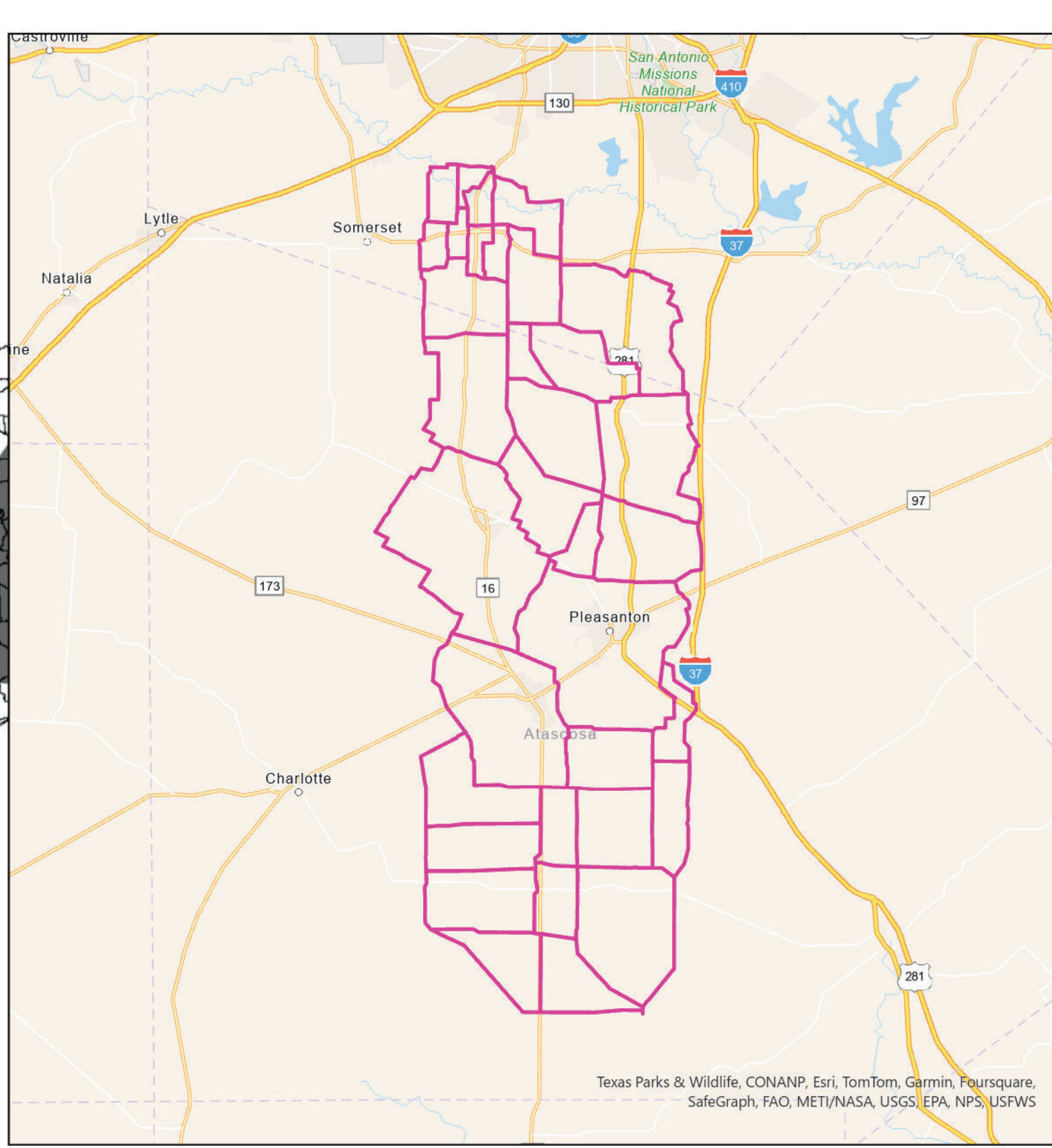
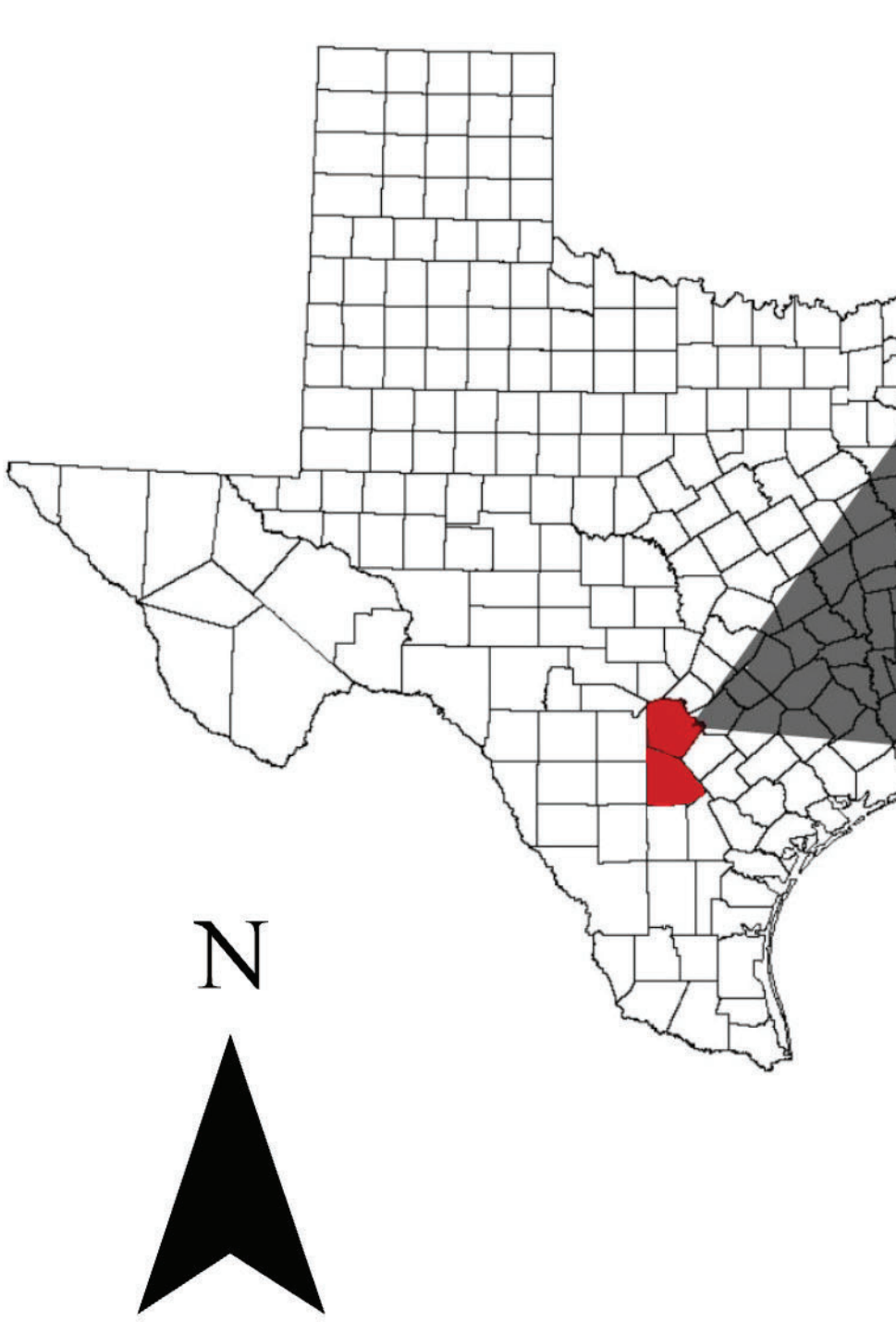
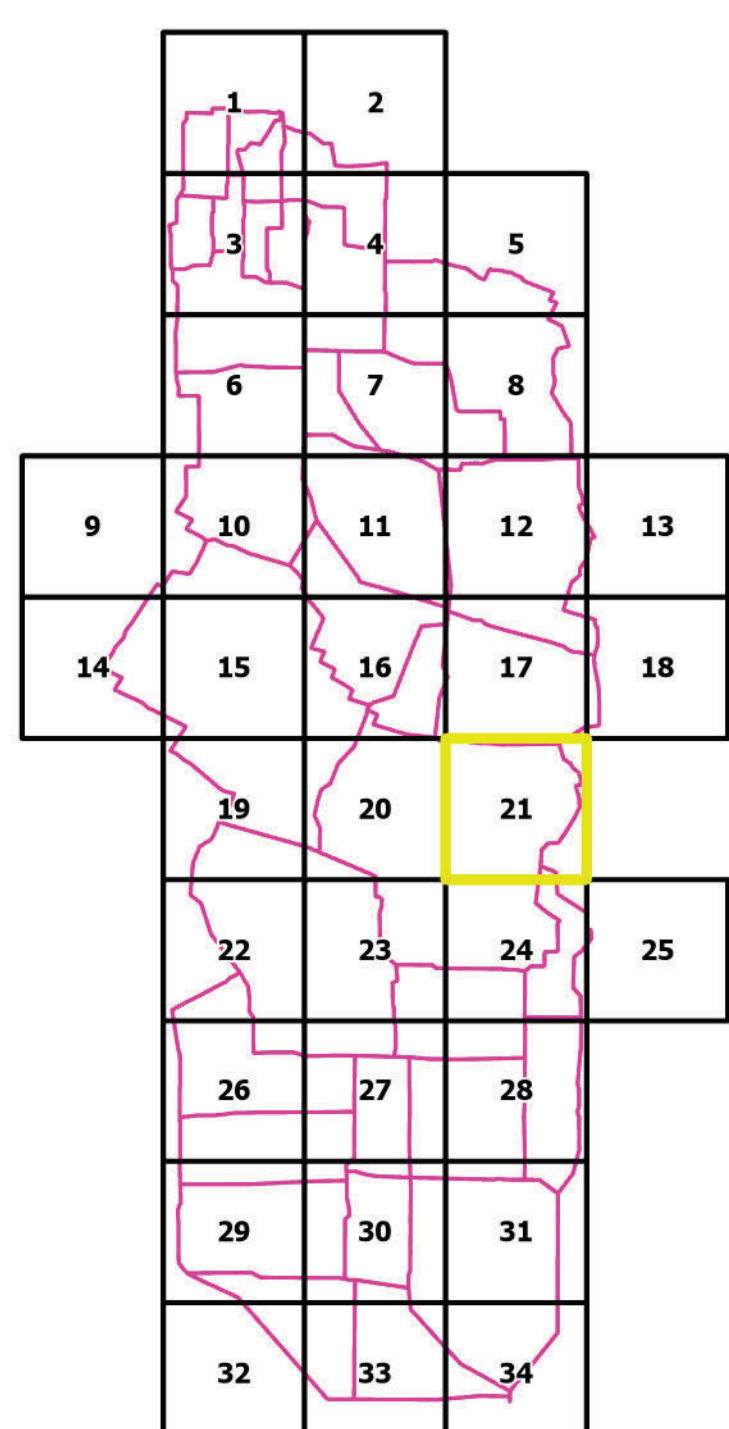


PRIMARY ALTERNATIVE ROUTES	SEGMENT COMPOSITION	TOTAL LENGTH IN MILES
A	1-5-8-10-19-27-28-30-34-39-44-47-51-58-59-65-68B-74-82-86-98-106-108-110	47.77
B	1-5-8-18-26-28-38-48-63-66-72-84-89-95-97-101-102-106-108-110	56.67
C	2-10-18-25-26-28-37-39-44-47-51-58-59-65-68B-74-82-86-98-106-108-110	50.71
D	2-10-18-25-26-28-38-48-63-66-72-84-89-96-100-101-102-106-108-110	55.95
E	2-10-18-25-26-28-38-48-63-66-72-84-89-96-104-108-110	55.81
F	2-10-18-25-26-28-38-48-63-66-73-80-81-82-86-98-106-108-110	53.42
G	2-10-18-25-26-28-38-48-63-67-68A-68B-74-82-86-98-106-108-110	52.23
H	2-10-18-25-26-28-38-48-51-58-59-65-68B-74-82-86-98-106-108-110	50.05
I	2-10-18-27-28-30-34-39-44-50-45B-52-54-55-58-59-65-68B-71-75-77-87-94-99-107-108-110	51.82
J	2-8-6-13-17-26-38-48-63-66-72-84-89-90-91-97-101-105-109-110	49.78
K	3-6-14-19-27-28-30-31-35-41-45A-45B-52-56-61-62-70-78-99-107-108-110	49.02
L	3-6-15-16-22A-22B-32-35-41-45A-45B-52-54-55-58-59-65-68B-74-82-86-98-106-108-110	46.99
M	3-6-15-21-30-31-35-41-45A-45B-52-54-55-58-59-65-68B-74-82-86-98-106-108-110	47.47
N	3-6-15-21-30-34-39-44-51-58-59-65-68B-74-81-85-90-91-97-101-102-106-108-110	47.6
O	3-6-15-21-30-34-39-44-51-58-59-65-68B-74-81-85-90-91-97-101-102-106-108-110	50.48
P	3-6-15-21-30-34-39-44-51-58-59-65-68B-74-81-85-90-92-93-94-99-107-108-110	50.48
Q	3-6-15-21-30-34-39-44-51-58-59-65-68B-74-82-83-87-94-99-107-108-110	48.23
R	3-6-15-21-30-34-39-44-51-58-59-65-68B-74-82-86-98-106-108-110	45.32
S	3-6-15-21-30-34-39-44-51-58-60-61-62-70-78-99-107-108-110	49.05
T	3-6-15-21-30-34-39-44-50-45B-52-56-61-62-70-78-99-107-108-110	47.9
U	3-6-20-28-30-34-39-44-50-45B-52-56-61-62-69-75-77-87-94-99-107-108-110	49.15
V	3-6-20-28-30-34-39-44-50-45B-52-56-61-62-70-78-99-107-108-110	50.47
W	3-6-20-28-30-31-35-41-45A-45B-52-54-55-58-59-65-68B-74-82-86-98-106-108-110	49.44
X	3-6-20-28-30-31-35-41-45A-45B-52-54-55-58-59-65-68B-74-81-85-90-91-97-101-102-106-108-110	50.85
Y	3-6-20-28-30-31-35-41-45A-45B-52-54-55-58-59-65-68B-74-81-85-90-92-93-94-99-107-108-110	48.87
Z	3-6-20-28-30-34-39-44-50-45B-52-56-61-62-70-78-99-107-108-110	49.05
AA	3-6-20-28-30-34-39-40-41-45A-45B-53-57-62-70-78-99-107-108-110	49.34
AB	3-6-20-28-30-34-39-44-50-45B-52-54-55-58-59-65-68B-71-75-77-87-94-99-107-108-110	49.88
AC	3-6-20-28-30-34-39-44-50-45B-52-56-61-62-70-78-99-107-108-110	48.35
AD	3-6-20-28-30-34-39-44-50-45B-53-57-62-70-78-99-107-108-110	48.64
AE	3-7-11-22A-12-24-46-57-62-70-78-99-107-108-110	51.03
AF	3-7-11-22A-22B-33-38-42-45A-45B-52-54-55-58-59-65-68B-74-82-86-98-106-108-110	50.66
AG	3-7-11-22A-22B-33-38-43-46-57-62-70-78-99-107-108-110	50.64
AH	1-4-17-29-38-48-63-66-72-84-89-96-104-108-110	56.19



HOWARD RD TO SAN MIGUEL 345KV

PROJECT FEATURES

- GRID INDEX
- NODES
- SEGMENTS
- PARCEL BOUNDARY
- COUNTY BOUNDARIES
- GRID PAGE #
- HABITABLE STRUCTURES
- COMMERCIAL
- RESIDENTIAL
- SCHOOL
- CHURCH
- HABITABLE STRUCTURE #