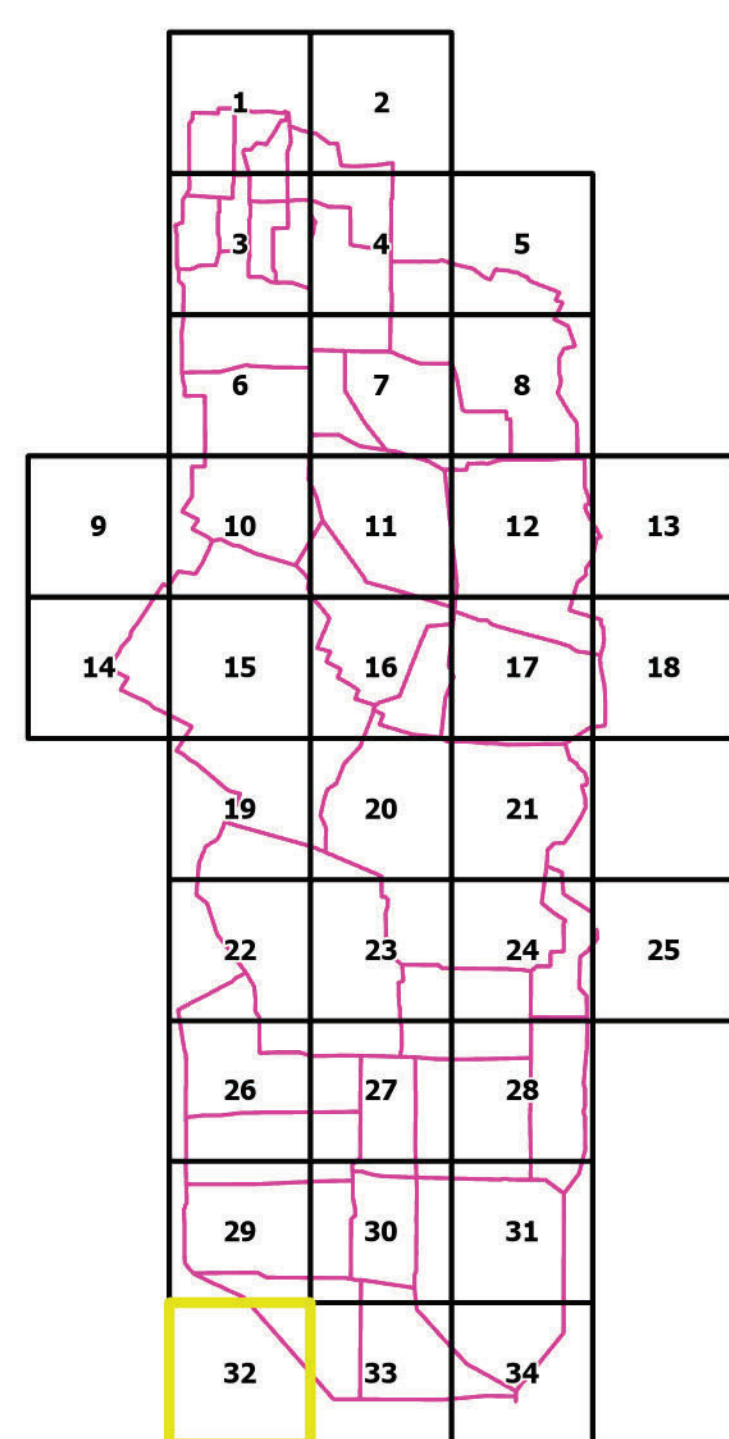
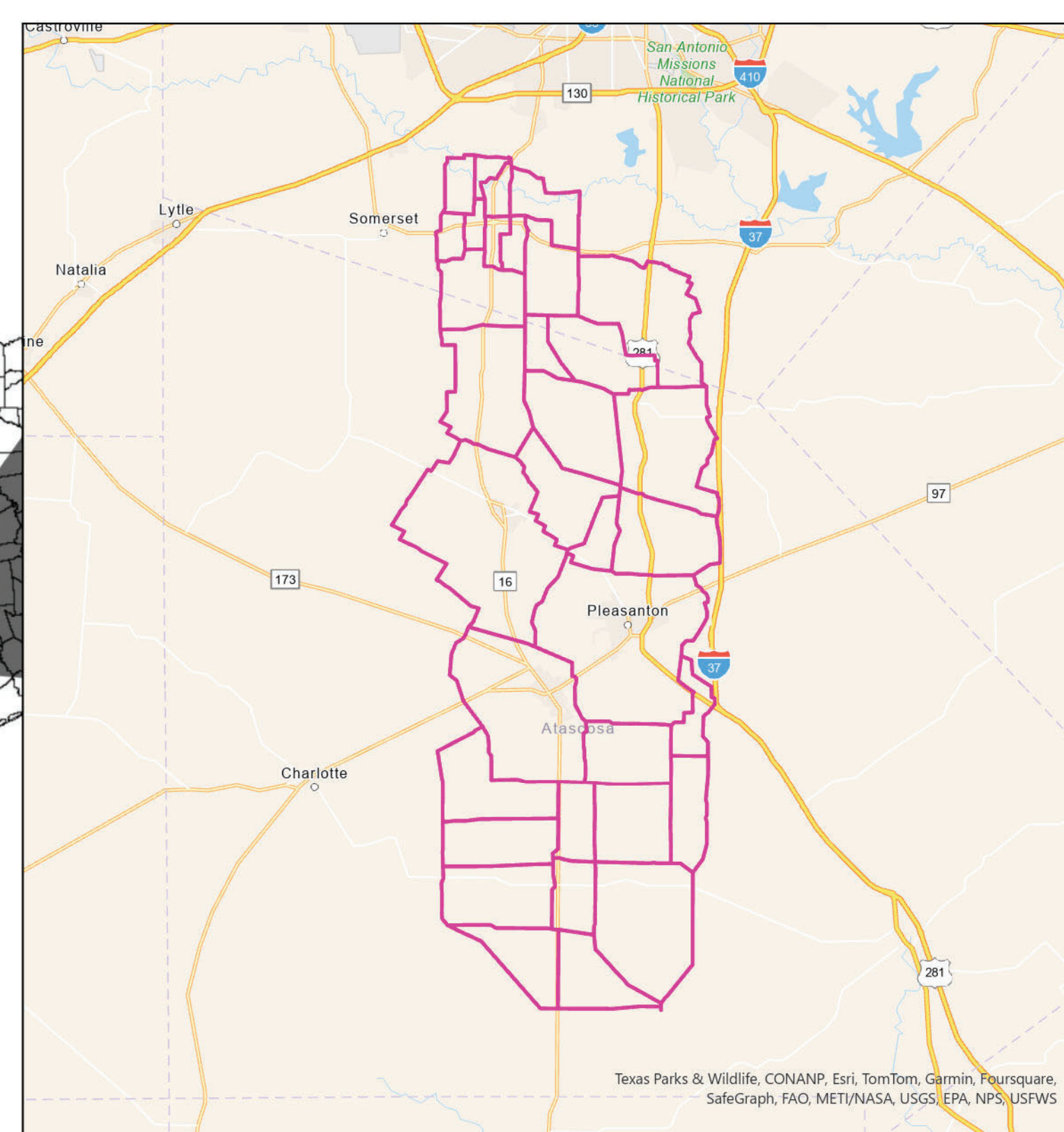
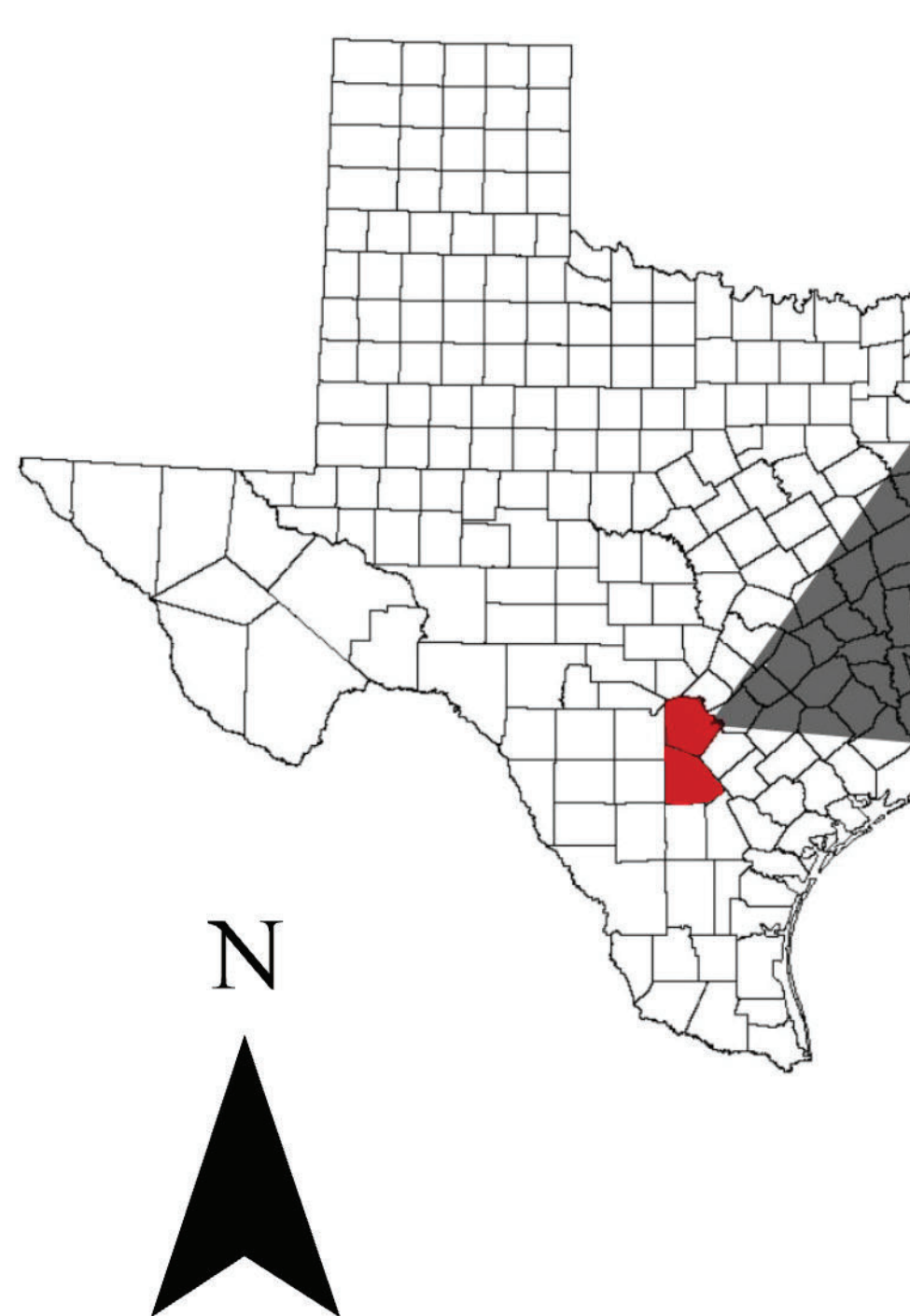


| PRIMARY ALTERNATIVE ROUTES | SEGMENT COMPOSITION | TOTAL LENGTH IN MILES |
|----------------------------|--|-----------------------|
| A | 1-5-8-10-19-27-28-30-34-39-44-47-51-58-59-65-68B-74-82-86-88-106-108-110 | 47.77 |
| B | 1-5-8-18-26-28-38-48-63-66-72-84-89-95-97-101-102-106-108-110 | 56.67 |
| C | 2-10-18-25-26-28-37-39-44-47-51-58-59-65-68B-74-82-86-88-106-108-110 | 50.71 |
| D | 2-10-18-25-26-28-38-48-63-66-72-84-89-96-100-101-102-106-108-110 | 55.95 |
| E | 2-10-18-25-26-28-38-48-63-66-72-84-89-96-104-108-110 | 55.81 |
| F | 2-10-18-25-26-28-38-48-63-66-73-80-81-82-86-88-106-108-110 | 53.42 |
| G | 2-10-18-25-26-28-38-48-63-67-68A-68B-74-82-86-88-106-108-110 | 52.23 |
| H | 2-10-18-25-26-28-38-48-51-58-59-65-68B-74-82-86-88-106-108-110 | 50.05 |
| I | 2-10-18-27-28-30-34-39-44-47-51-58-59-65-68B-71-75-77-87-94-99-107-108-110 | 58.81 |
| J | 2-8-6-13-17-26-38-48-63-66-72-84-88-90-91-97-101-105-109-110 | 58.92 |
| K | 3-6-14-19-27-28-30-31-35-41-45A-45B-52-56-61-62-70-78-99-107-108-110 | 49.78 |
| L | 3-6-15-16-22A-22B-32-35-41-45A-45B-52-54-55-58-59-65-68B-74-82-86-88-106-108-110 | 49.02 |
| M | 3-6-15-21-30-31-35-41-45A-45B-52-54-55-58-59-65-68B-74-82-86-88-106-108-110 | 46.99 |
| N | 3-6-15-21-30-34-39-44-47-51-58-59-65-68B-74-82-86-88-106-108-110 | 47.47 |
| O | 3-6-15-21-30-34-39-44-47-51-58-59-65-68B-74-81-85-90-91-97-101-102-106-108-110 | 47.6 |
| P | 3-6-15-21-30-34-39-44-47-51-58-59-65-68B-74-81-85-90-92-93-94-99-107-108-110 | 50.48 |
| Q | 3-6-15-21-30-34-39-44-47-51-58-59-65-68B-74-82-83-87-94-99-107-108-110 | 48.23 |
| R | 3-6-15-21-30-34-39-44-47-51-58-59-65-68B-74-82-86-88-106-108-110 | 45.32 |
| S | 3-6-15-21-30-34-39-44-47-51-58-60-61-62-70-78-99-107-108-110 | 49.05 |
| T | 3-6-15-21-30-34-39-44-50-45B-52-56-61-62-70-78-99-107-108-110 | 47.9 |
| U | 3-6-20-28-30-34-39-44-47-51-58-59-65-68B-71-77-87-94-99-107-108-110 | 49.15 |
| V | 3-6-20-28-30-34-39-44-50-45B-53-57-62-70-78-99-107-108-110 | 50.47 |
| W | 3-6-20-28-30-31-35-41-45A-45B-53-57-62-69-75-77-87-94-99-107-108-110 | 49.44 |
| X | 3-6-20-28-30-31-35-41-45A-45B-53-57-62-70-78-99-107-108-110 | 50.85 |
| Y | 3-6-20-28-30-31-35-41-45A-45B-53-57-62-70-78-99-107-108-110 | 48.87 |
| Z | 3-6-20-28-30-34-39-44-47-51-58-59-65-68B-74-82-83-87-94-99-107-108-110 | 49.05 |
| AA | 3-6-20-28-30-34-39-44-47-51-58-59-65-68B-74-82-86-88-106-108-110 | 49.34 |
| AB | 3-6-20-28-30-34-39-44-50-45B-52-54-55-58-59-65-68B-71-75-77-87-94-99-107-108-110 | 49.88 |
| AC | 3-6-20-28-30-34-39-44-50-45B-52-56-61-62-70-78-99-107-108-110 | 48.35 |
| AD | 3-6-20-28-30-34-39-44-50-45B-53-57-62-70-78-99-107-108-110 | 48.64 |
| AE | 3-7-11-22A-12-24-46-57-62-70-78-99-107-108-110 | 51.03 |
| AF | 3-7-11-22A-22B-33-38-42-45A-45B-52-54-55-58-59-65-68B-74-82-86-88-106-108-110 | 50.66 |
| AG | 3-7-11-22A-22B-33-38-43-46-57-62-70-78-99-107-108-110 | 50.64 |
| AH | 1-4-17-29-38-48-63-66-72-84-89-96-104-109-110 | 56.19 |



Page 32/34



HOWARD RD TO SAN MIGUEL 345KV

| PROJECT FEATURES | |
|-------------------|-----------------------|
| GRID INDEX | HABITABLE STRUCTURES |
| NODES | COMMERCIAL |
| SEGMENTS | RESIDENTIAL |
| PARCEL BOUNDARY | SCHOOL |
| COUNTY BOUNDARIES | CHURCH |
| GRID PAGE # | HABITABLE STRUCTURE # |

