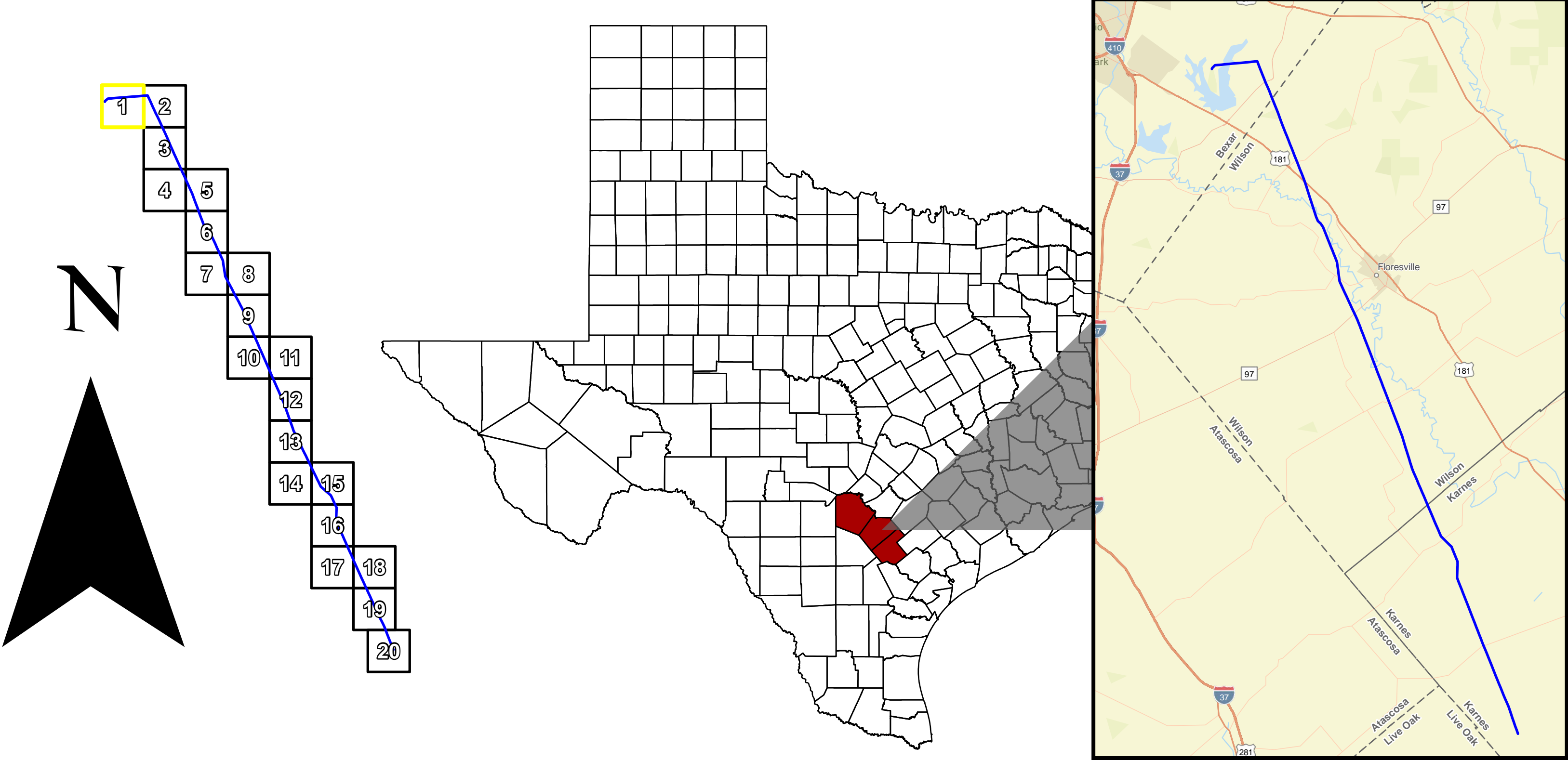




CPS Energy is the nation's largest municipally owned energy utility providing both natural gas and electric service. We serve more than 840,750 gas customers in and around San Antonio, the nation's seventh largest city. This map has been produced by CPS Energy for its own use.

Accordingly, certain information, features or details may have been emphasized over others or may have been left out.

CPS Energy does not warrant the accuracy of this map, either as to scale, accuracy or completeness



SPRUCE TO PAWNEE

LEGEND	
GRID INDEX	POWERLINE EASEMENT
SEGMENTS	HABITABLE STRUCTURE
PROPERTY BOUNDARY	HABITABLE STRUCTURE #
COUNTY BOUNDARY	GRID PAGE #

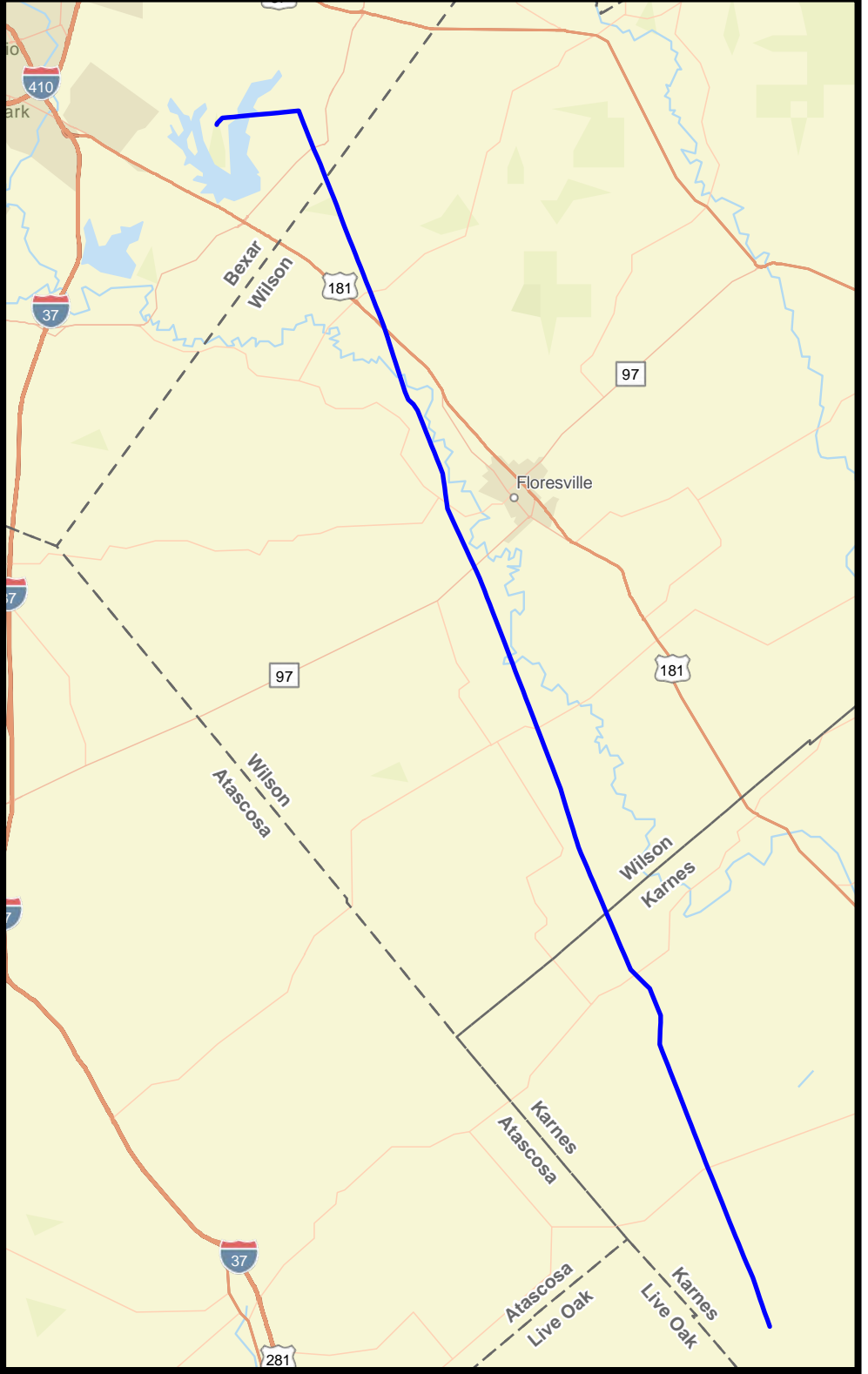
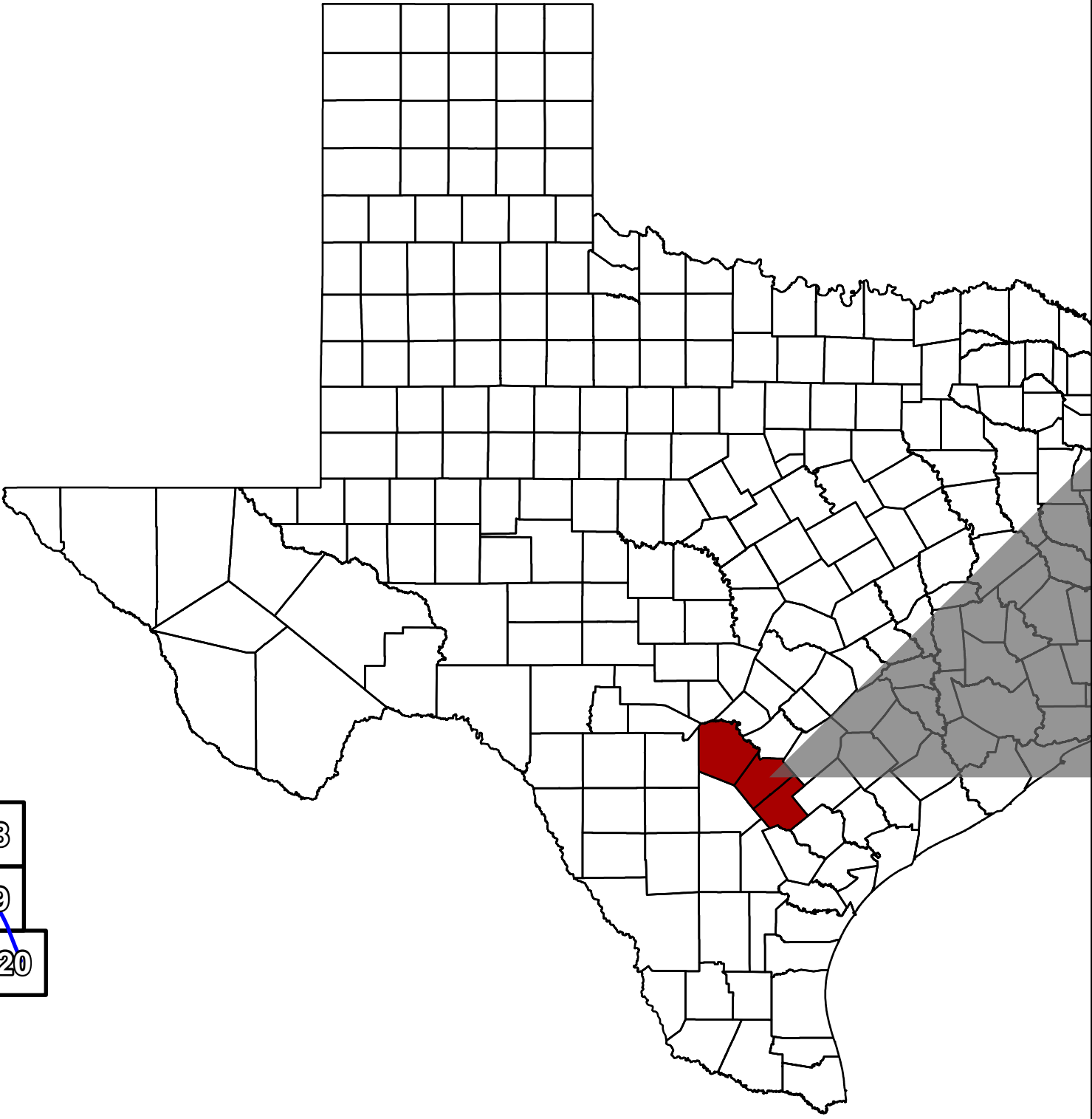
0 500 1,100
US Feet
1 inch = 500 US Feet



CPS Energy is the nation's largest municipally owned energy utility providing both natural gas and electric service. We serve more than 840,750 gas customers in and around San Antonio, the nation's seventh largest city. This map has been produced by CPS Energy for its own use.

Accordingly, certain information, features or details may have been emphasized over others or may have been left out.

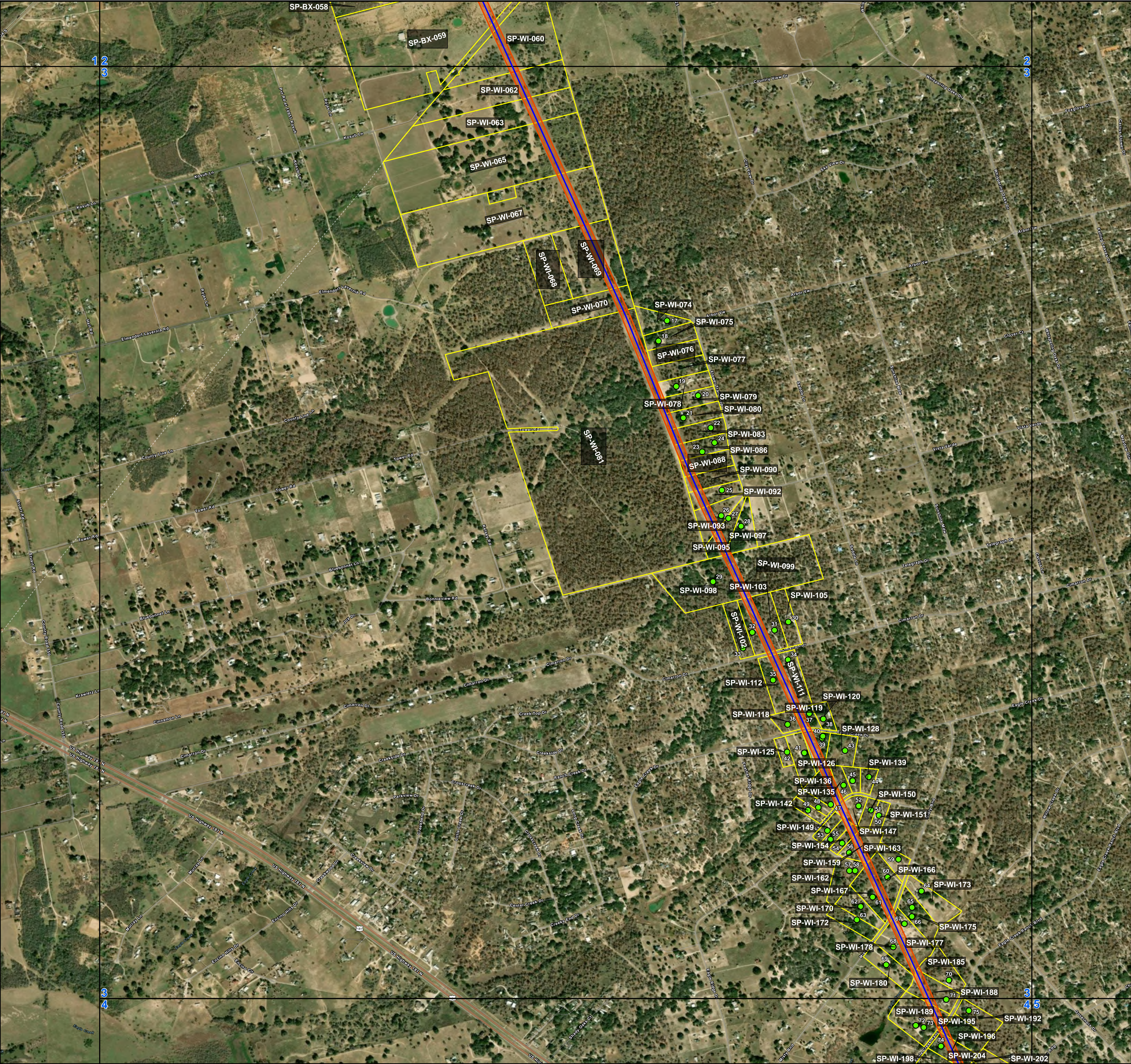
CPS Energy does not warrant the accuracy of this map, either as to scale, accuracy or completeness



SPRUCE TO PAWNEE

LEGEND	
GRID INDEX	POWERLINE EASEMENT
SEGMENTS	HABITABLE STRUCTURE
PROPERTY BOUNDARY	HABITABLE STRUCTURE #
COUNTY BOUNDARY	GRID PAGE #

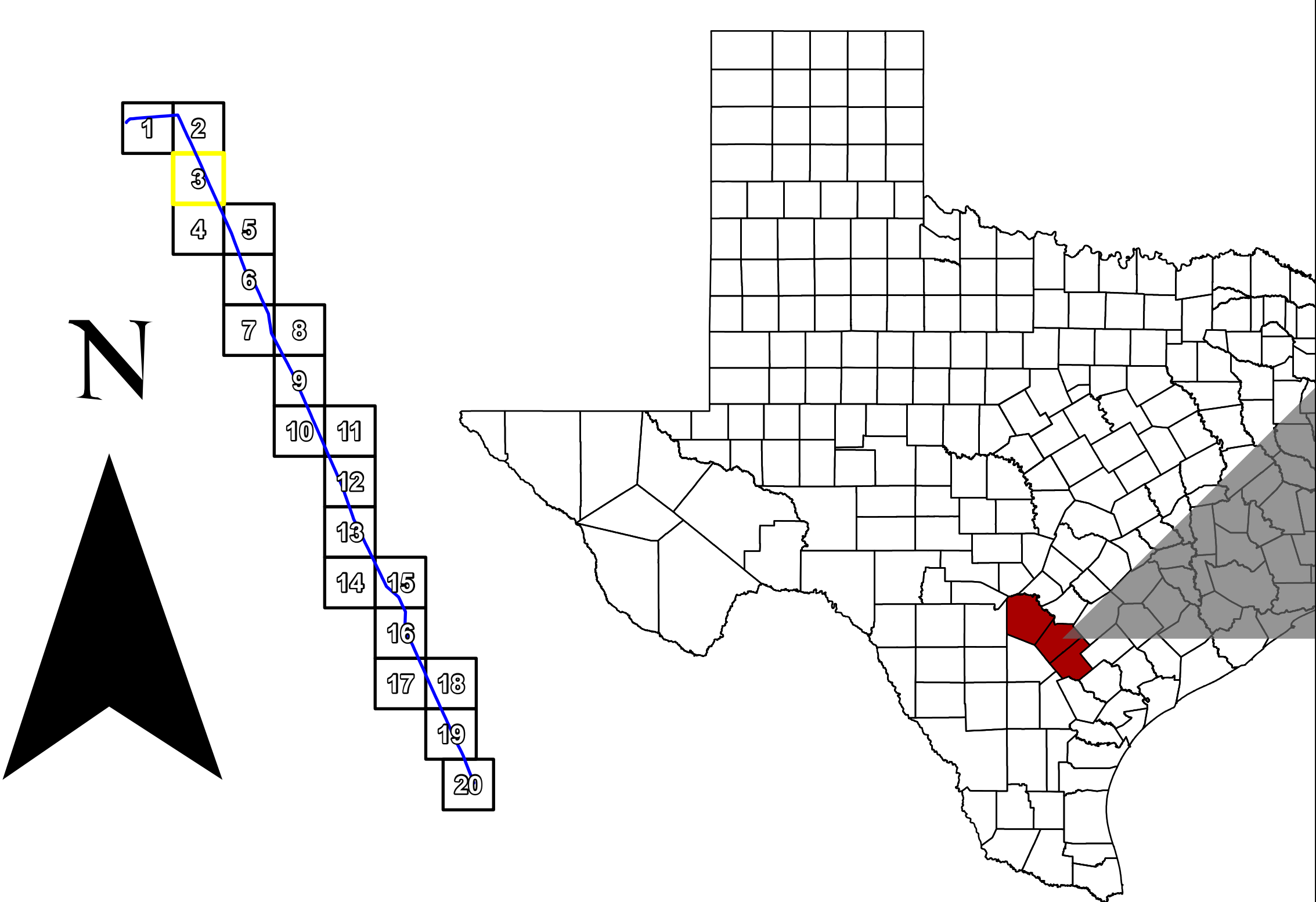
0 500 1,000
US Feet
1 inch = 500 US Feet



CPS Energy is the nation's largest municipally owned energy utility providing both natural gas and electric service. We serve more than 840,750 gas customers in and around San Antonio, the nation's seventh largest city. This map has been produced by CPS Energy for its own use.

Accordingly, certain information, features or details may have been emphasized over others or may have been left out.

CPS Energy does not warrant the accuracy of this map, either as to scale, accuracy or completeness



SPRUCE TO PAWNEE

LEGEND	
	GRID INDEX
	SEGMENTS
	PROPERTY BOUNDARY
	COUNTY BOUNDARY
	POWERLINE EASEMENT
	HABITABLE STRUCTURE
	HABITABLE STRUCTURE #
	GRID PAGE #

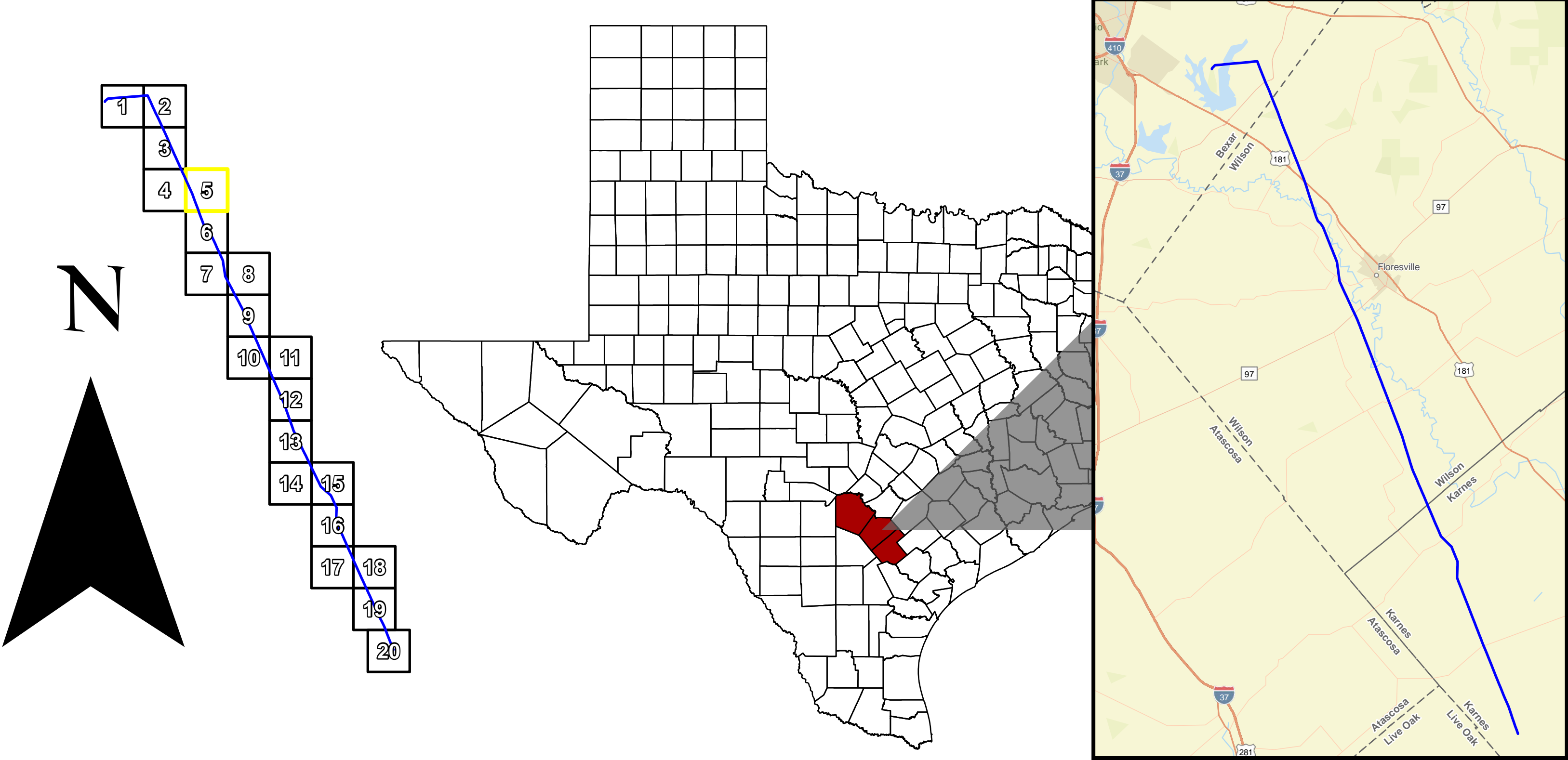
0 500 1,000
US Feet
1 inch = 500 US Feet



CPS Energy is the nation's largest municipally owned energy utility providing both natural gas and electric service. We serve more than 840,750 gas customers in and around San Antonio, the nation's seventh largest city. This map has been produced by CPS Energy for its own use.

Accordingly, certain information, features or details may have been emphasized over others or may have been left out.

CPS Energy does not warrant the accuracy of this map, either as to scale, accuracy or completeness



SPRUCE TO PAWNEE

LEGEND	
GRID INDEX	POWERLINE EASEMENT
SEGMENTS	HABITABLE STRUCTURE
PROPERTY BOUNDARY	HABITABLE STRUCTURE #
COUNTY BOUNDARY	GRID #

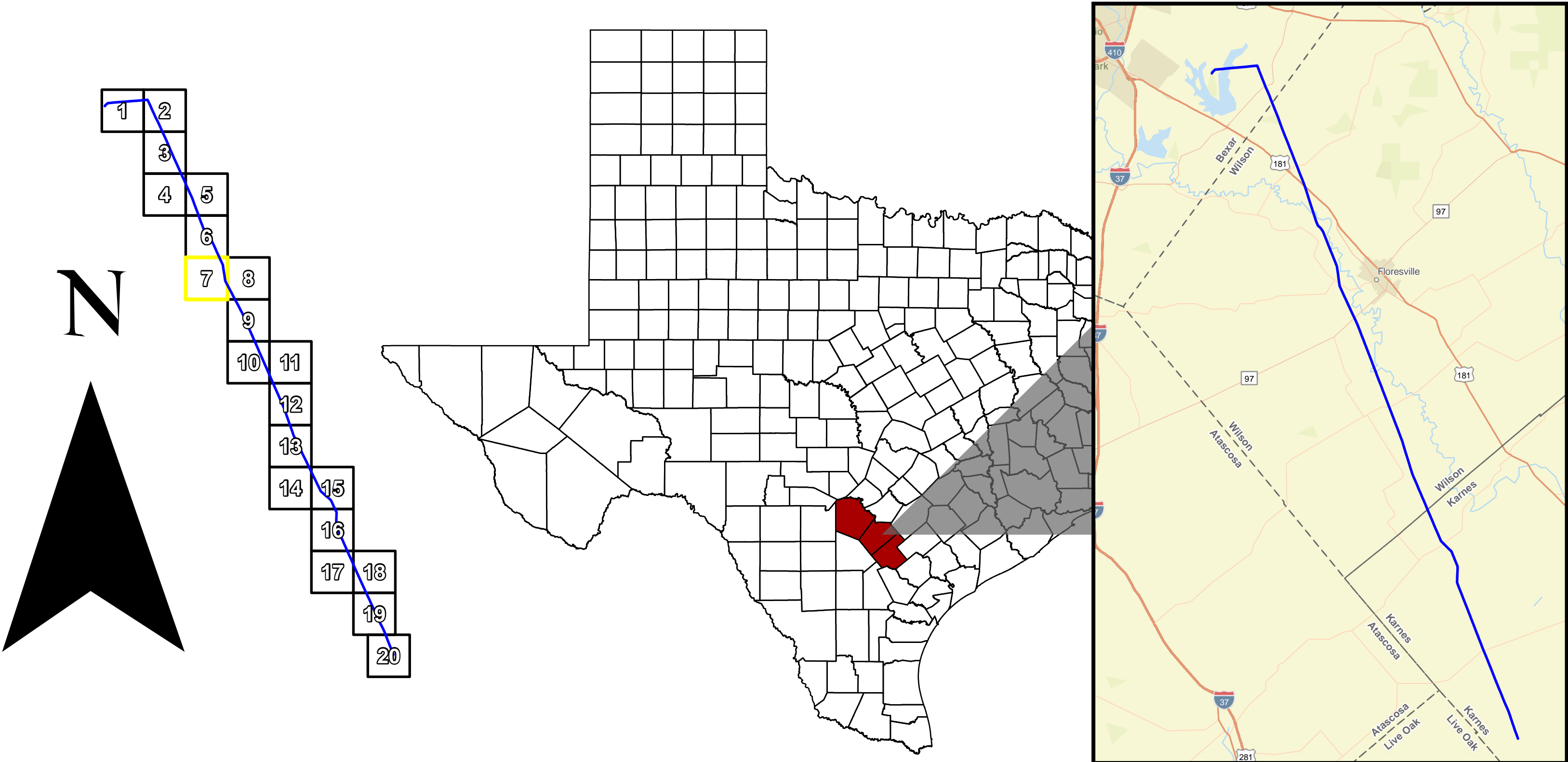
0 500 1,000
US Feet
1 inch = 500 US Feet



CPS Energy is the nation's largest municipally owned energy utility providing both natural gas and electric service. We serve more than 840,750 gas customers in and around San Antonio, the nation's seventh largest city. This map has been produced by CPS Energy for its own use.

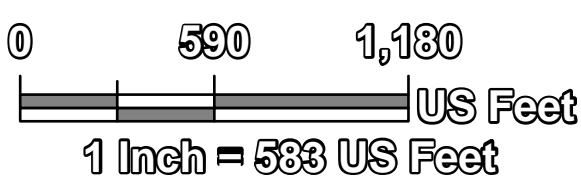
Accordingly, certain information, features or details may have been emphasized over others or may have been left out.

CPS Energy does not warrant the accuracy of this map, either as to scale, accuracy or completeness



SPRUCE TO PAWNEE

LEGEND	
GRID INDEX	POWERLINE EASEMENT
SEGMENTS	HABITABLE STRUCTURE
PROPERTY BOUNDARY	HABITABLE STRUCTURE #
COUNTY BOUNDARY	GRID PAGE #

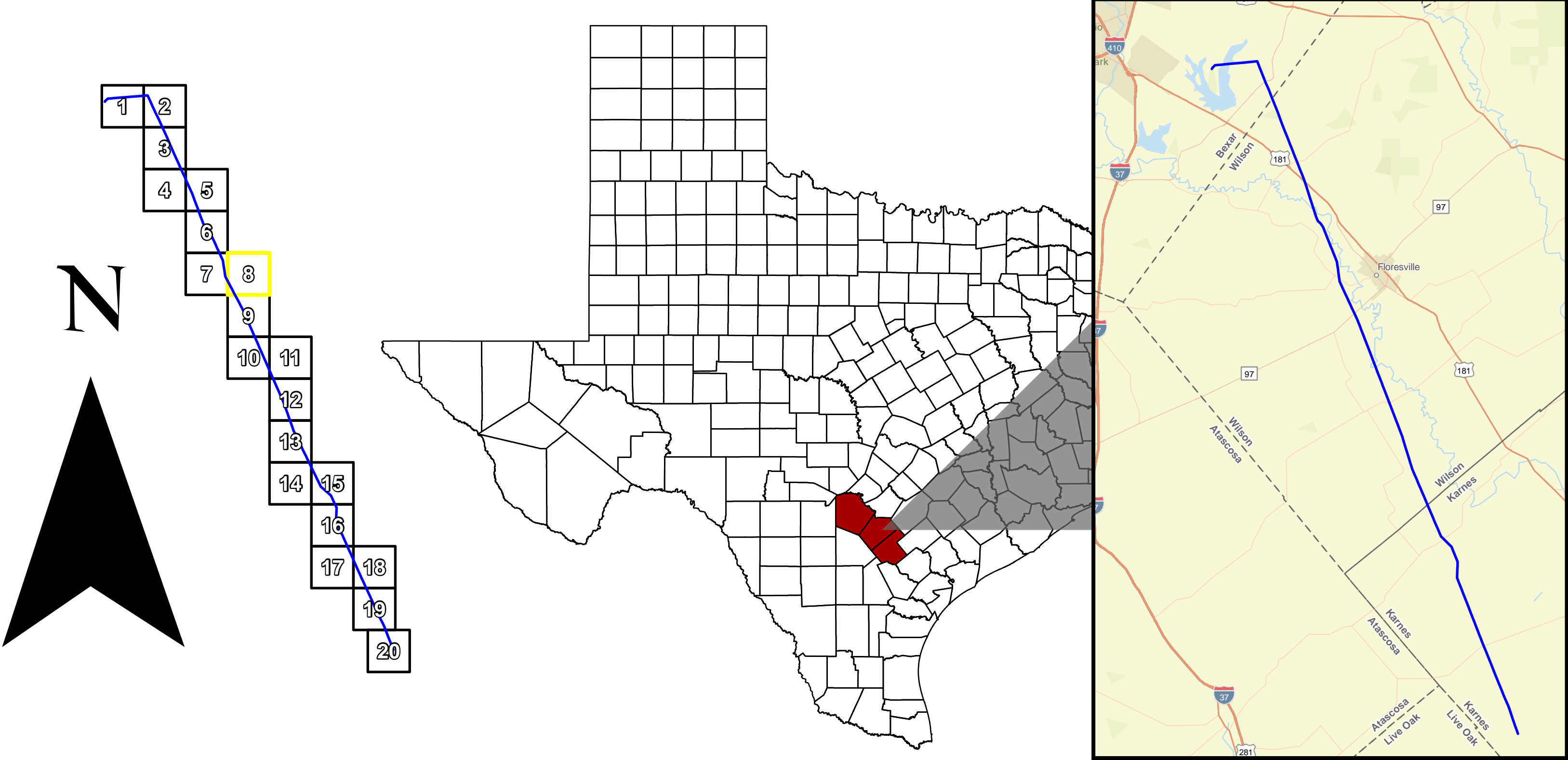




CPS Energy is the nation's largest municipally owned energy utility providing both natural gas and electric service. We serve more than 840,750 gas customers in and around San Antonio, the nation's seventh largest city. This map has been produced by CPS Energy for its own use.

Accordingly, certain information, features or details may have been emphasized over others or may have been left out.

CPS Energy does not warrant the accuracy of this map, either as to scale, accuracy or completeness



SPRUCE TO PAWNEE

LEGEND	
GRID INDEX	POWERLINE EASEMENT
SEGMENTS	HABITABLE STRUCTURE
PROPERTY BOUNDARY	HABITABLE STRUCTURE #
COUNTY BOUNDARY	GRID PAGE #

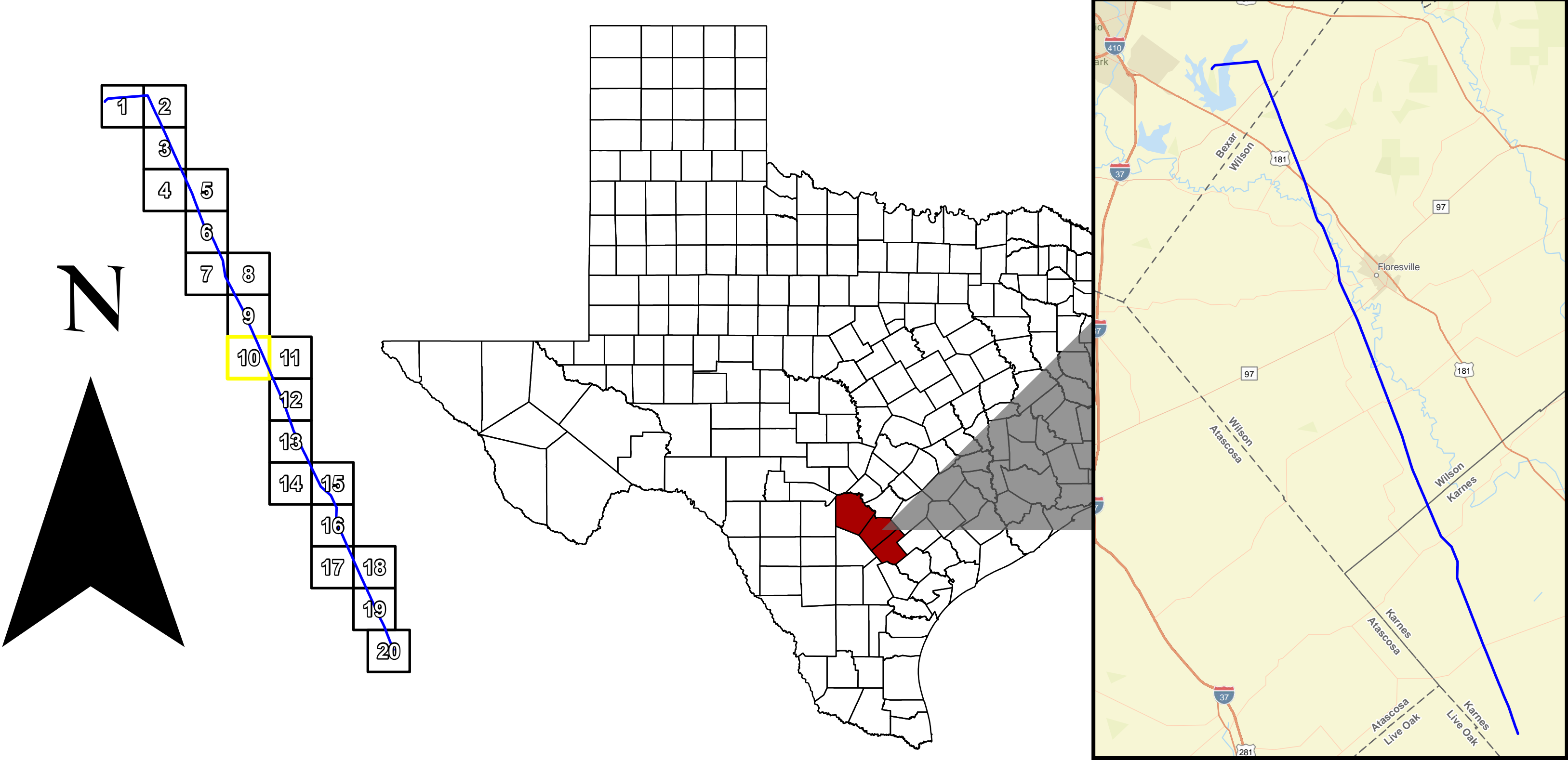
0 500 1,000
US Feet
1 inch = 500 US Feet



CPS Energy is the nation's largest municipally owned energy utility providing both natural gas and electric service. We serve more than 840,750 gas customers in and around San Antonio, the nation's seventh largest city. This map has been produced by CPS Energy for its own use.

Accordingly, certain information, features or details may have been emphasized over others or may have been left out.

CPS Energy does not warrant the accuracy of this map, either as to scale, accuracy or completeness



SPRUCE TO PAWNEE

LEGEND	
GRID INDEX	POWERLINE EASEMENT
SEGMENTS	HABITABLE STRUCTURE
PROPERTY BOUNDARY	HABITABLE STRUCTURE #
COUNTY BOUNDARY	GRID PAGE #

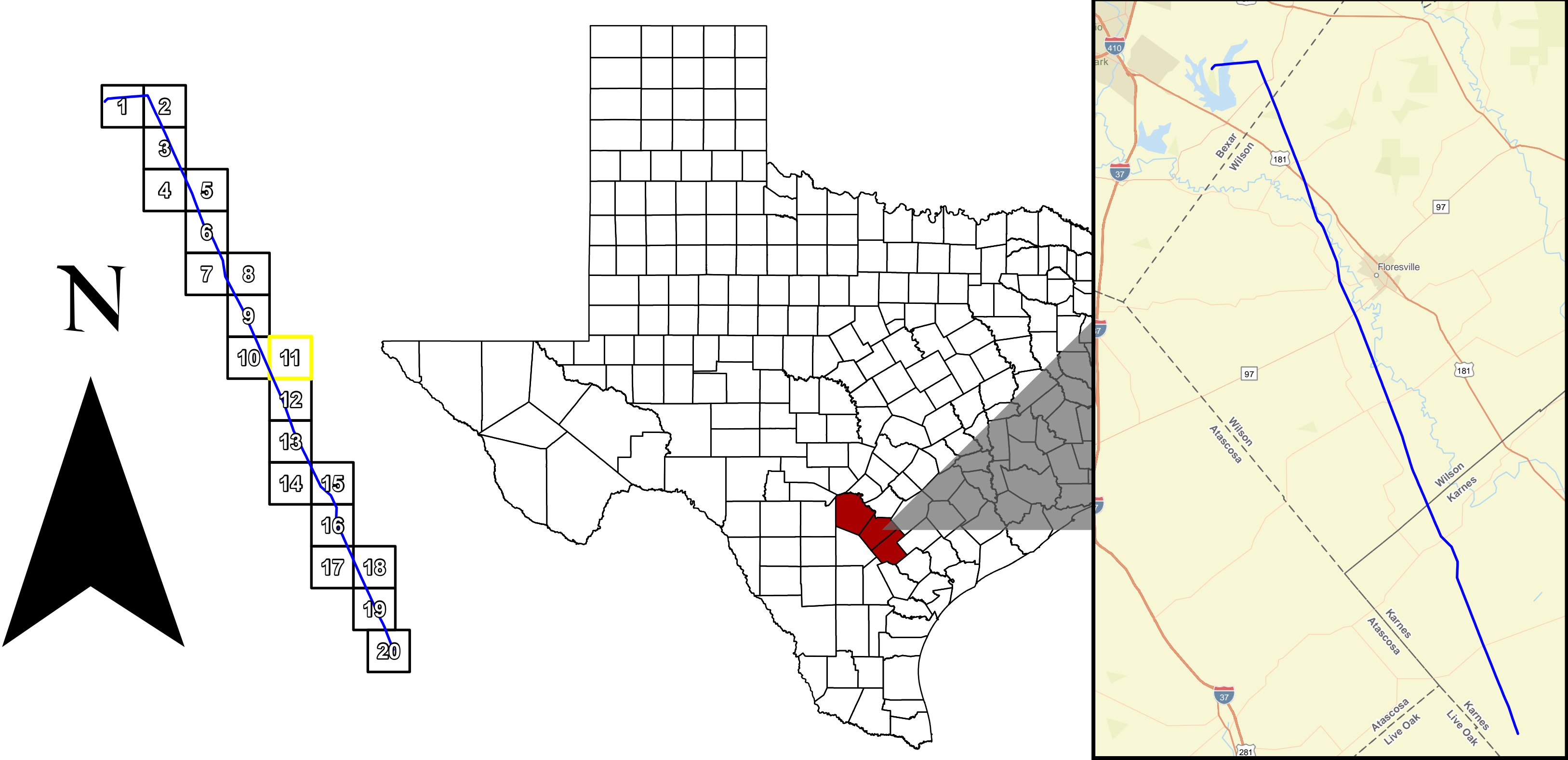
0 500 1,000
US Feet
1 inch = 500 US Feet



CPS Energy is the nation's largest municipally owned energy utility providing both natural gas and electric service. We serve more than 840,750 gas customers in and around San Antonio, the nation's seventh largest city. This map has been produced by CPS Energy for its own use.

Accordingly, certain information, features or details may have been emphasized over others or may have been left out.

CPS Energy does not warrant the accuracy of this map, either as to scale, accuracy or completeness



SPRUCE TO PAWNEE

LEGEND	
GRID INDEX	POWERLINE EASEMENT
SEGMENTS	HABITABLE STRUCTURE
PROPERTY BOUNDARY	HABITABLE STRUCTURE #
COUNTY BOUNDARY	GRID PAGE #

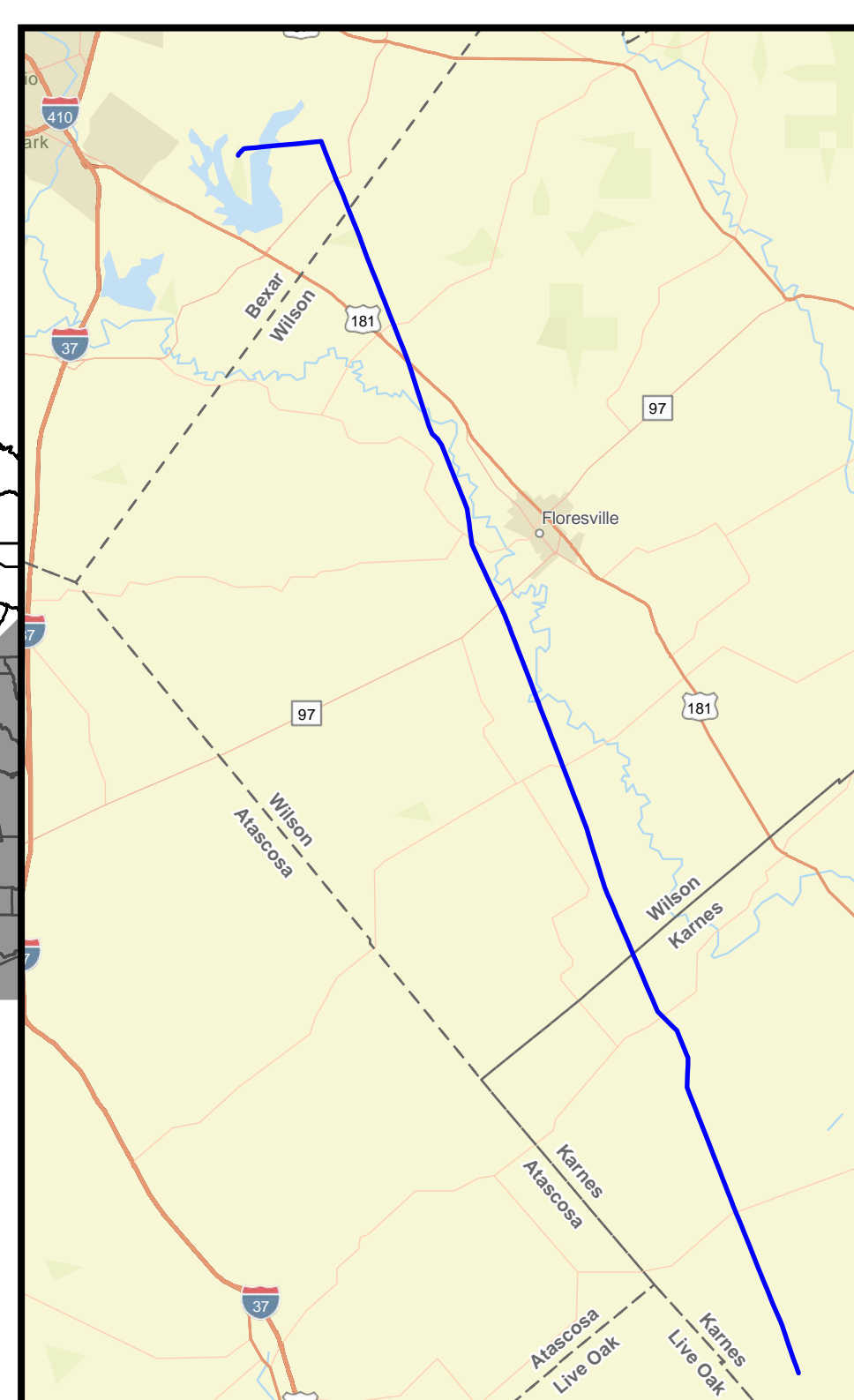
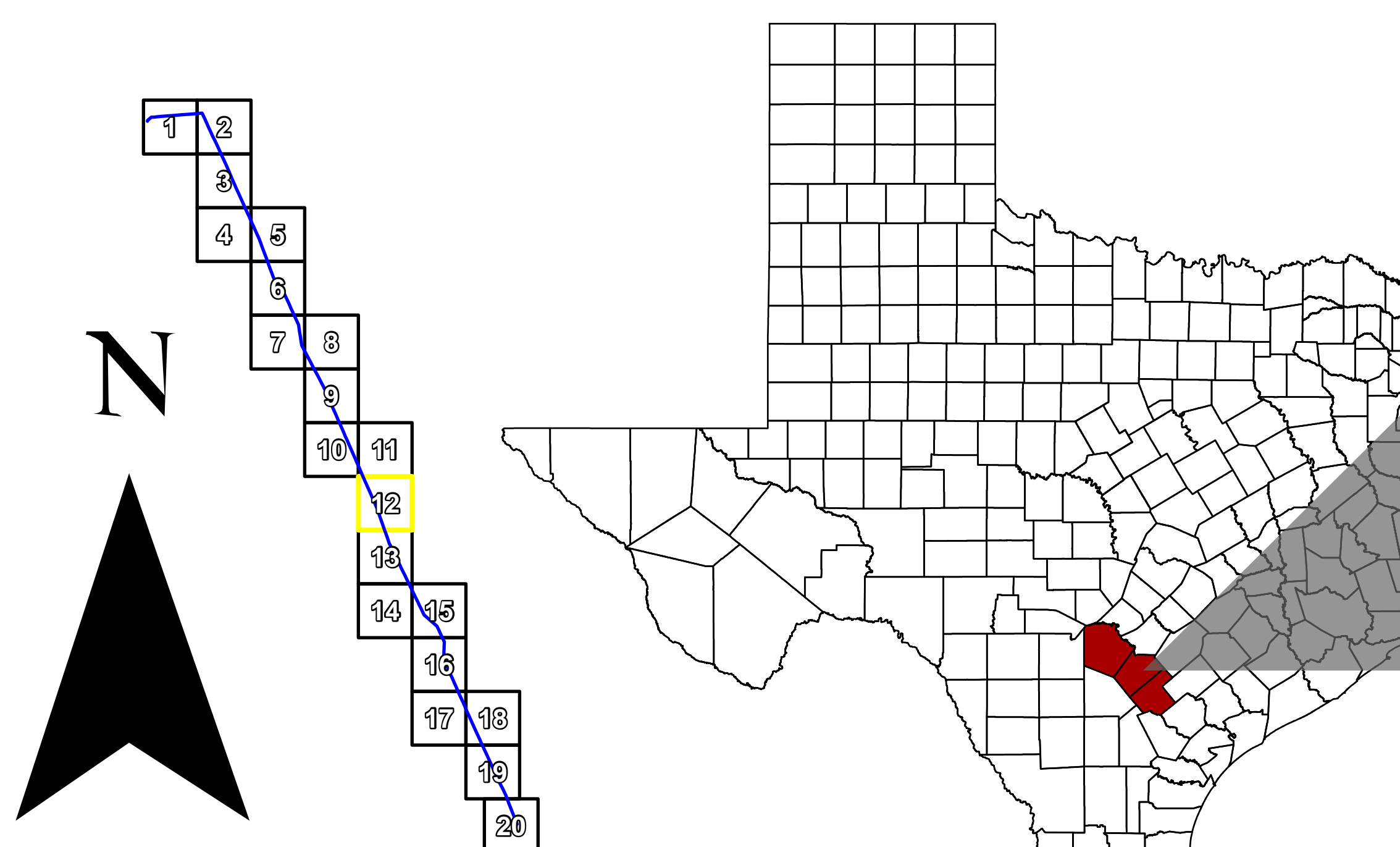
0 500 1,000
US Feet
1 inch = 500 US Feet



CPS Energy is the nation's largest municipally owned energy utility providing both natural gas and electric service. We serve more than 840,750 gas customers in and around San Antonio, the nation's seventh largest city. This map has been produced by CPS Energy for its own use.







Accordingly, certain information, features or details may have been emphasized over others or may have been left out.

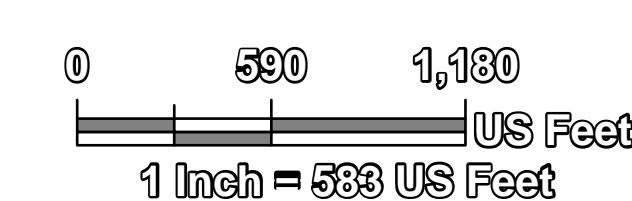
CPS Energy does not warrant the accuracy of this map, either as to scale, accuracy or completeness



SPRUCE TO PAWNEE

LEGEND

-  GRID INDEX
- SEGMENTS
-  PROPERTY BOUNDARY
-  COUNTY BOUNDARY
-  POWERLINE EASEMENT
- HABITABLE STRUCTURE
-  HABITABLE STRUCTURE #
-  GRID PAGE #

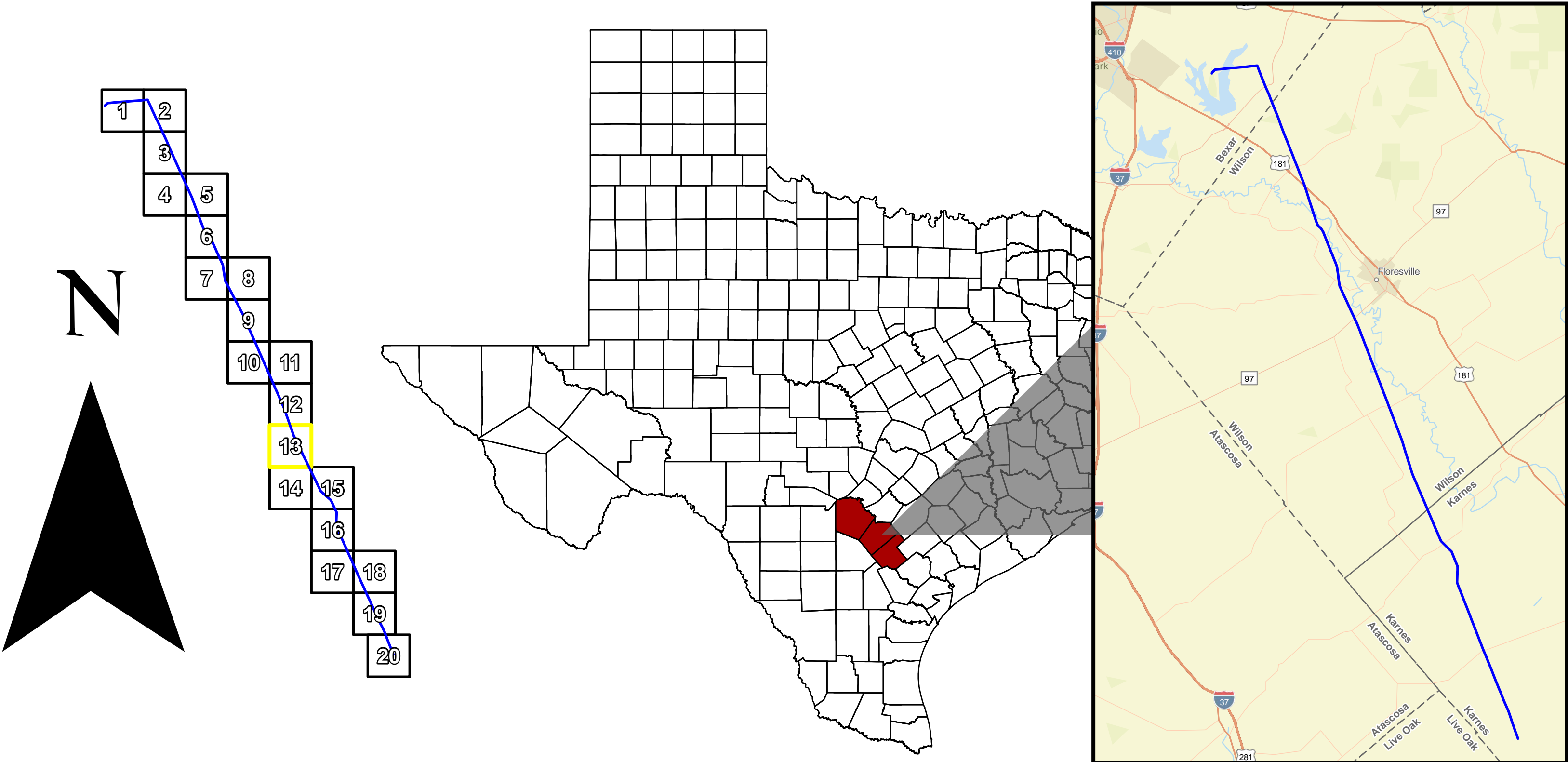




CPS Energy is the nation's largest municipally owned energy utility providing both natural gas and electric service. We serve more than 840,750 gas customers in and around San Antonio, the nation's seventh largest city. This map has been produced by CPS Energy for its own use.

Accordingly, certain information, features or details may have been emphasized over others or may have been left out.

CPS Energy does not warrant the accuracy of this map, either as to scale, accuracy or completeness



SPRUCE TO PAWNEE

LEGEND	
	GRID INDEX
	SEGMENTS
	PROPERTY BOUNDARY
	COUNTY BOUNDARY
	POWERLINE EASEMENT
	HABITABLE STRUCTURE
	HABITABLE STRUCTURE #
	GRID PAGE #

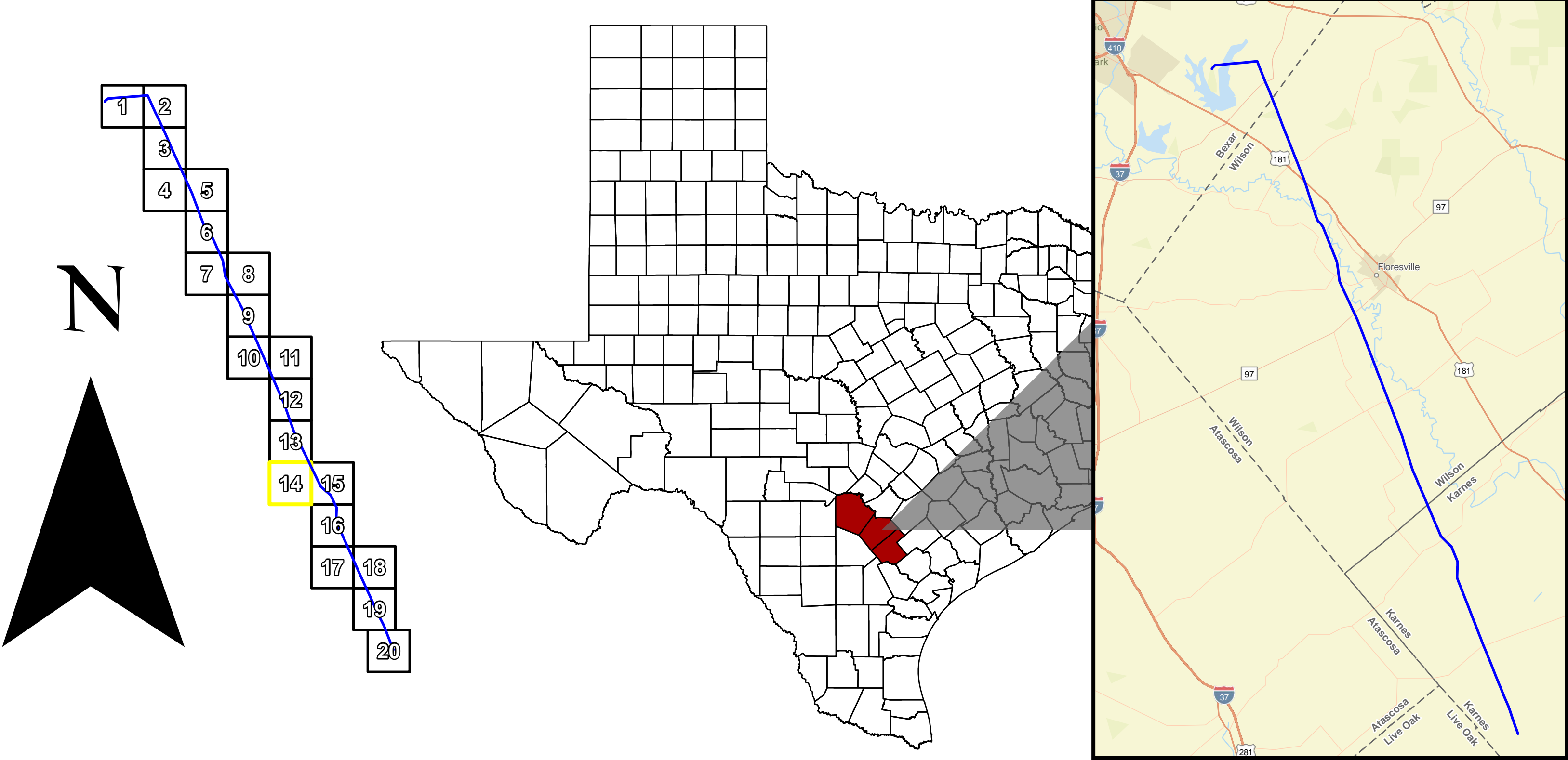
0 500 1,000
US Feet
1 inch = 500 US Feet



CPS Energy is the nation's largest municipally owned energy utility providing both natural gas and electric service. We serve more than 840,750 gas customers in and around San Antonio, the nation's seventh largest city. This map has been produced by CPS Energy for its own use.

Accordingly, certain information, features or details may have been emphasized over others or may have been left out.

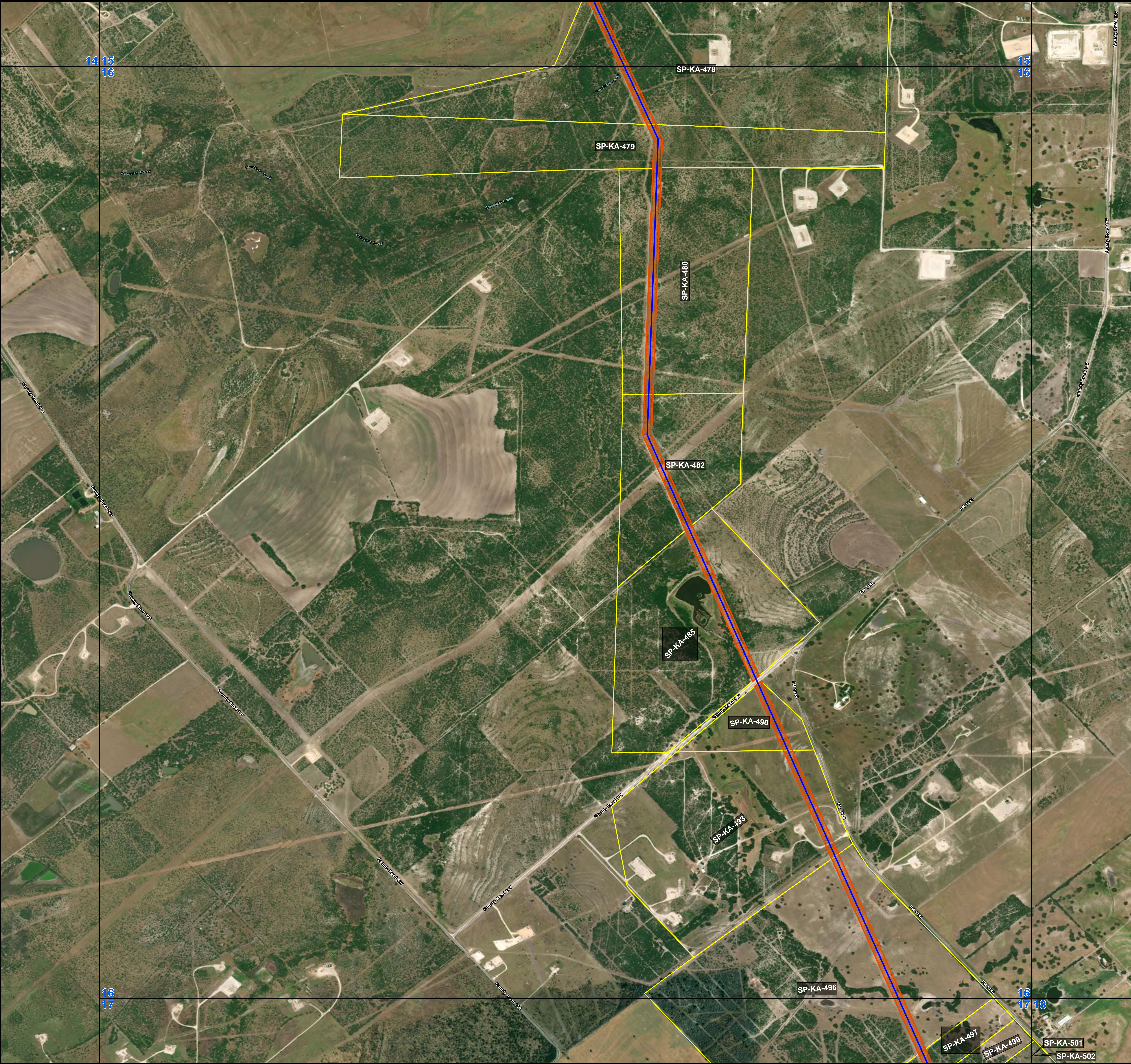
CPS Energy does not warrant the accuracy of this map, either as to scale, accuracy or completeness



SPRUCE TO PAWNEE

LEGEND	
	GRID INDEX
	SEGMENTS
	PROPERTY BOUNDARY
	COUNTY BOUNDARY
	POWERLINE EASEMENT
	HABITABLE STRUCTURE
	HABITABLE STRUCTURE #
	GRID PAGE #

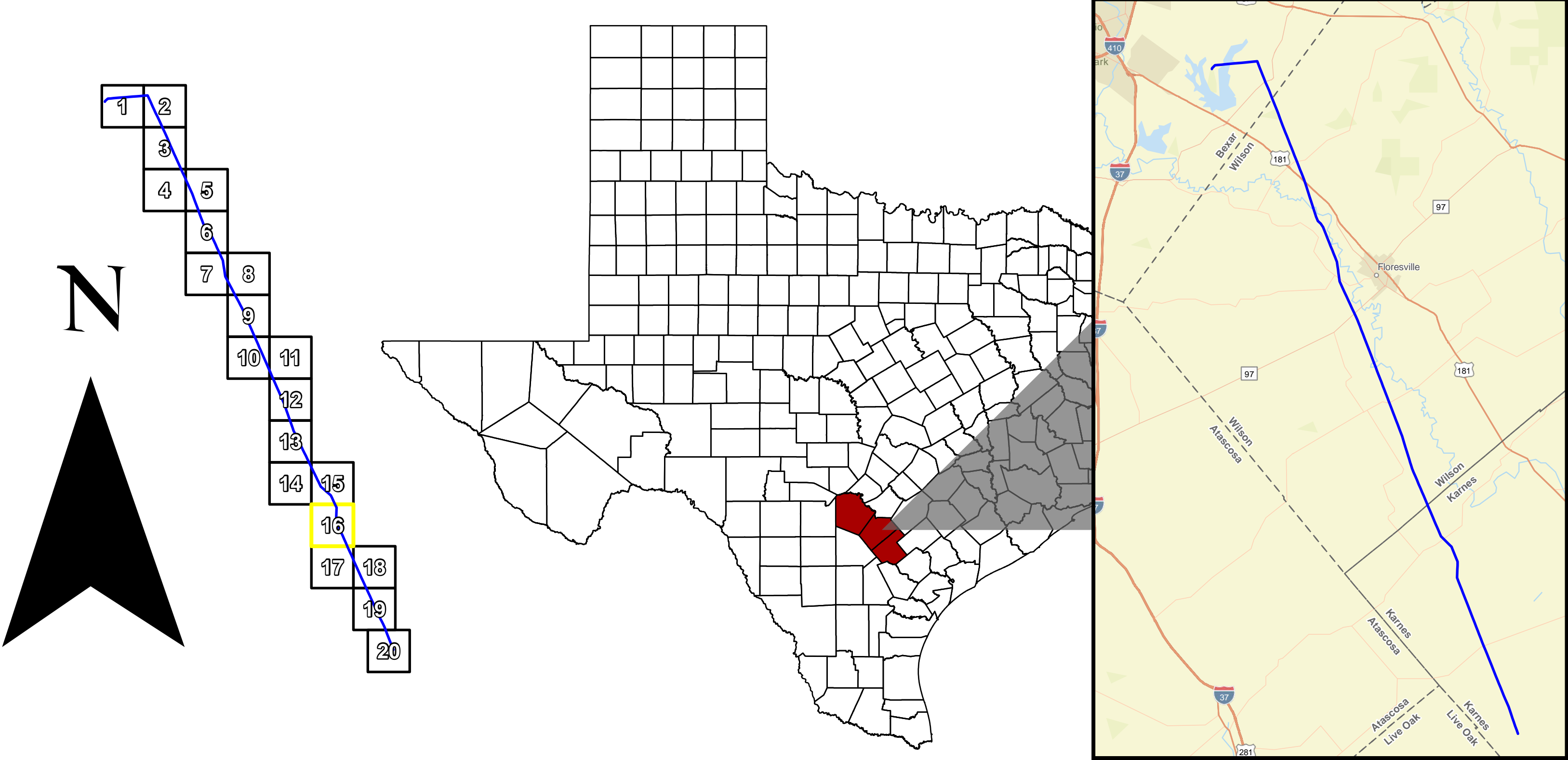
0 500 1,000
US Feet
1 inch = 500 US Feet



CPS Energy is the nation's largest municipally owned energy utility providing both natural gas and electric service. We serve more than 840,750 gas customers in and around San Antonio, the nation's seventh largest city. This map has been produced by CPS Energy for its own use.

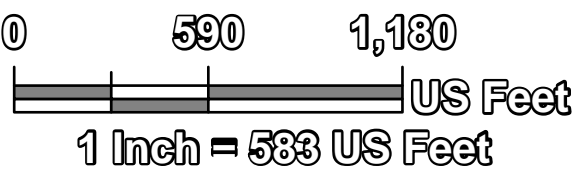
Accordingly, certain information, features or details may have been emphasized over others or may have been left out.

CPS Energy does not warrant the accuracy of this map, either as to scale, accuracy or completeness



SPRUCE TO PAWNEE

LEGEND	
GRID INDEX	POWERLINE EASEMENT
SEGMENTS	HABITABLE STRUCTURE
PROPERTY BOUNDARY	HABITABLE STRUCTURE #
COUNTY BOUNDARY	GRID PAGE #

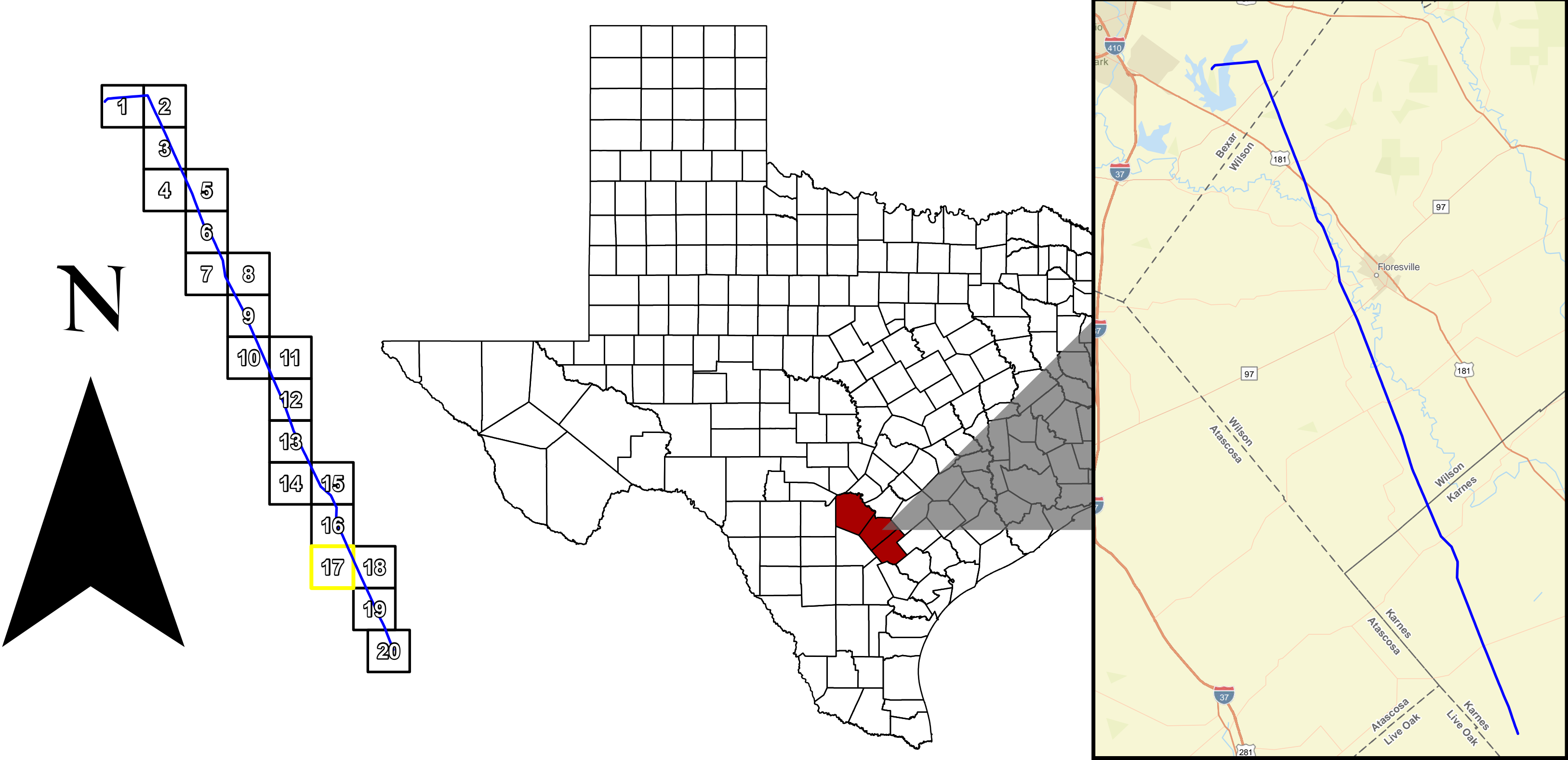




CPS Energy is the nation's largest municipally owned energy utility providing both natural gas and electric service. We serve more than 840,750 gas customers in and around San Antonio, the nation's seventh largest city. This map has been produced by CPS Energy for its own use.

Accordingly, certain information, features or details may have been emphasized over others or may have been left out.

CPS Energy does not warrant the accuracy of this map, either as to scale, accuracy or completeness



SPRUCE TO PAWNEE

LEGEND	
GRID INDEX	POWERLINE EASEMENT
SEGMENTS	HABITABLE STRUCTURE
PROPERTY BOUNDARY	HABITABLE STRUCTURE #
COUNTY BOUNDARY	GRID PAGE #

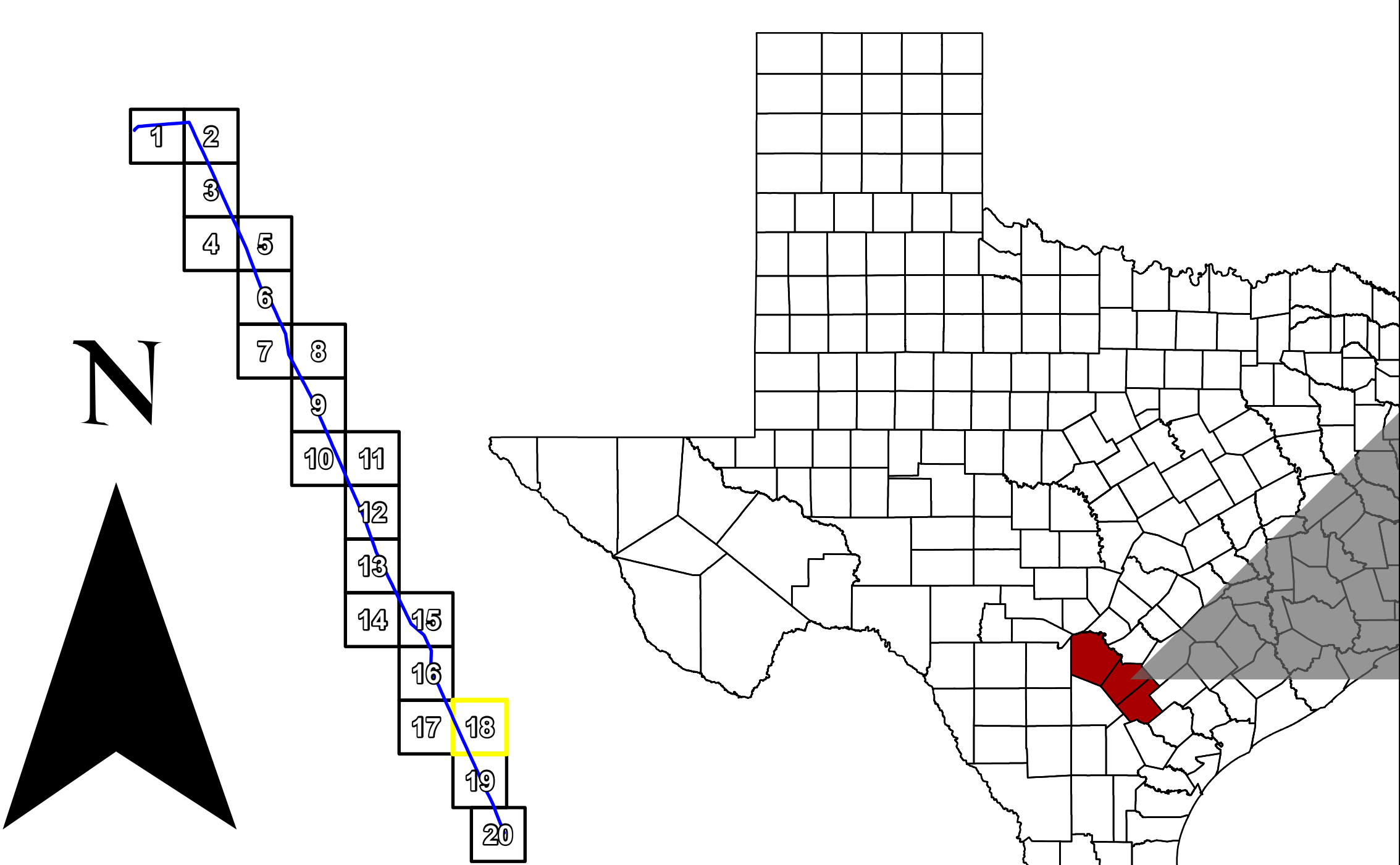
0 500 1,000
1 inch = 500 US Feet



CPS Energy is the nation's largest municipally owned energy utility providing both natural gas and electric service. We serve more than 840,750 gas customers in and around San Antonio, the nation's seventh largest city. This map has been produced by CPS Energy for its own use.

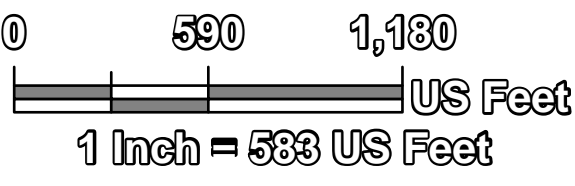
Accordingly, certain information, features or details may have been emphasized over others or may have been left out.

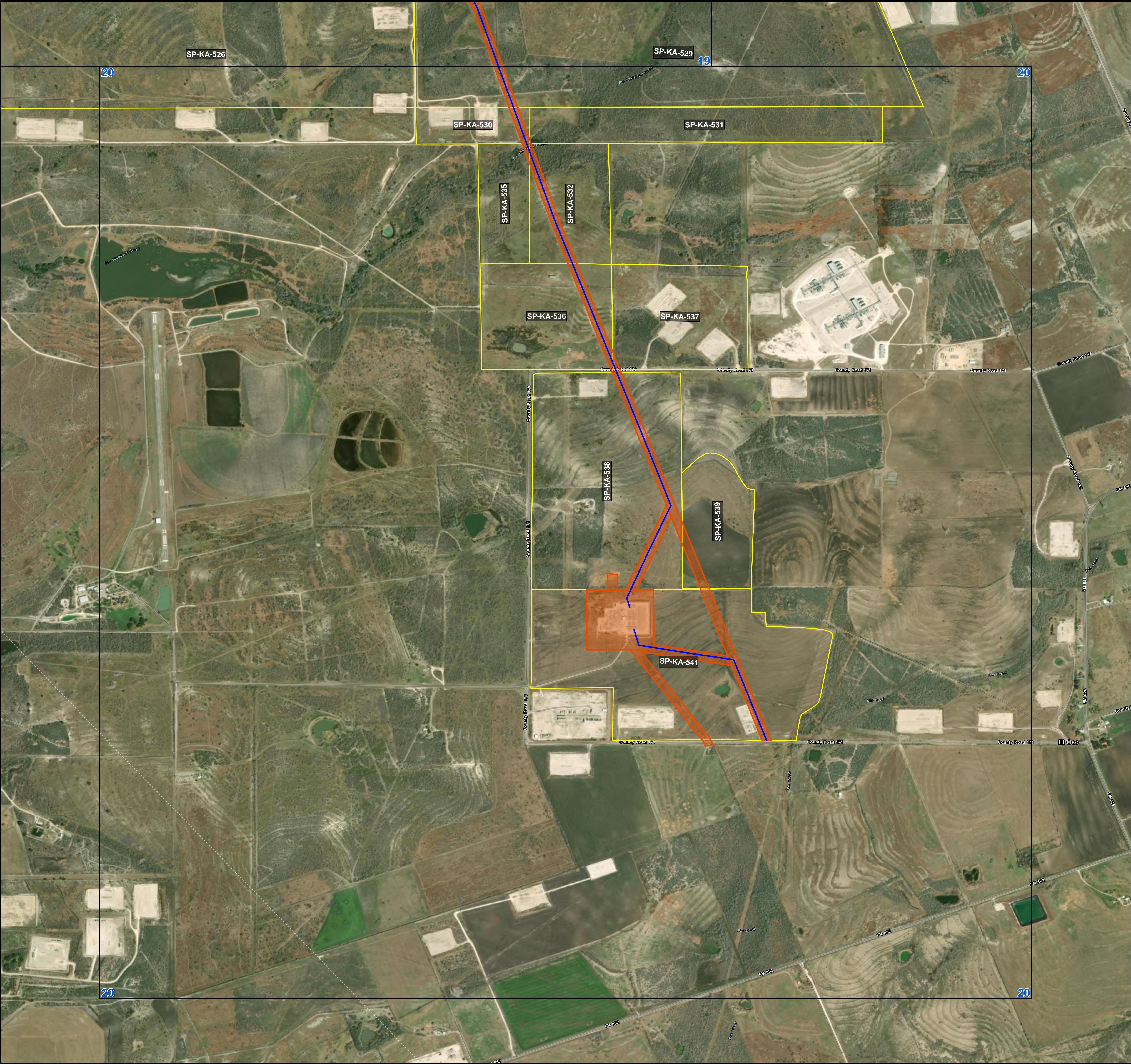
CPS Energy does not warrant the accuracy of this map, either as to scale, accuracy or completeness



SPRUCE TO PAWNEE

LEGEND	
	GRID INDEX
	SEGMENTS
	PROPERTY BOUNDARY
	COUNTY BOUNDARY
	POWERLINE EASEMENT
	HABITABLE STRUCTURE
	HABITABLE STRUCTURE #
	GRID PAGE #

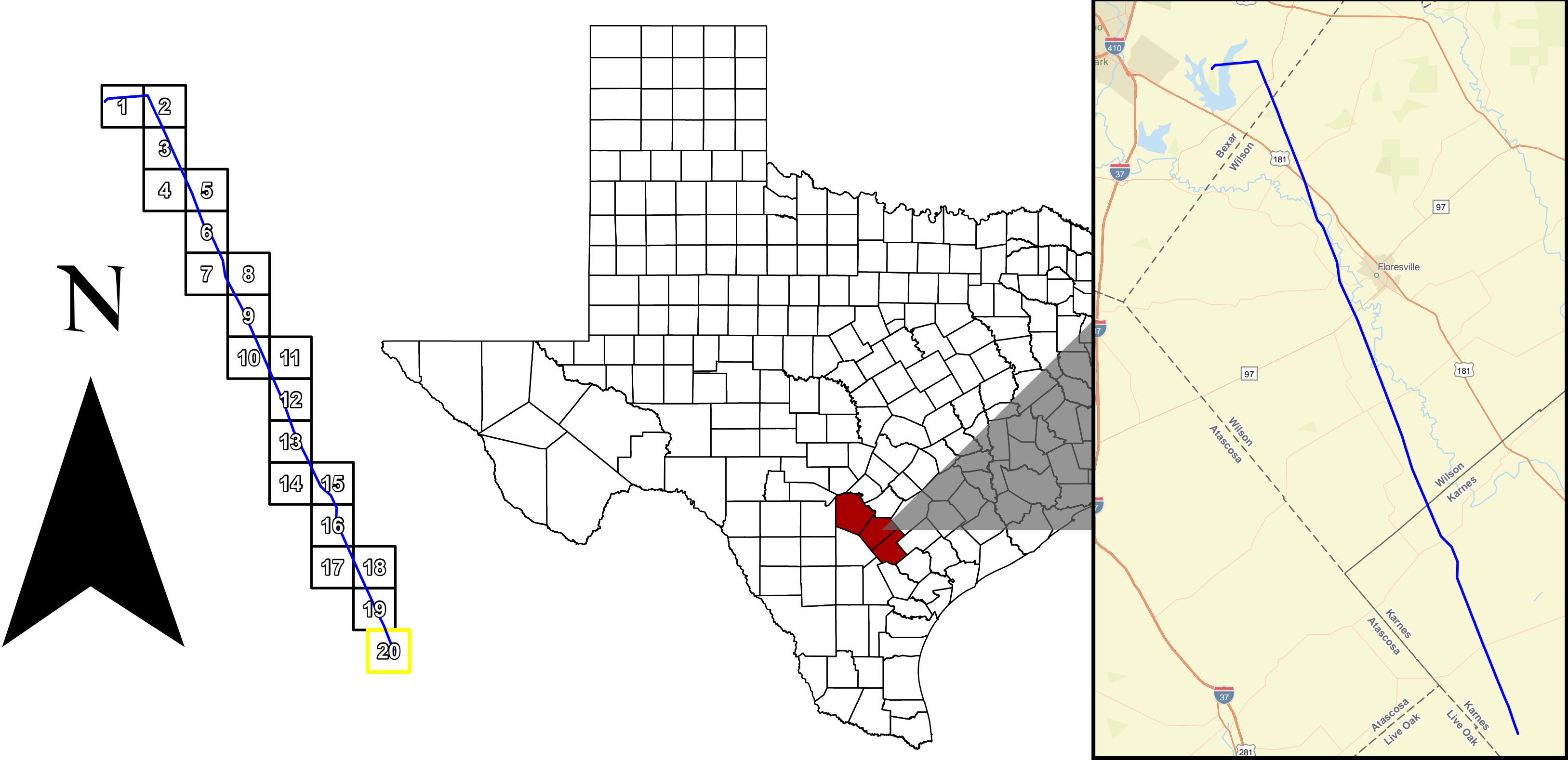




CPS Energy is the nation's largest municipally owned energy utility providing both natural gas and electric service. We serve more than 840,750 gas customers in and around San Antonio, the nation's seventh largest city. This map has been produced by CPS Energy for its own use.

Accordingly, certain information, features or details may have been emphasized over others or may have been left out.

CPS Energy does not warrant the accuracy of this map, either as to scale, accuracy or completeness



SPRUCE TO PAWNEE

LEGEND	
GRID INDEX	POWERLINE EASEMENT
SEGMENTS	HABITABLE STRUCTURE
PROPERTY BOUNDARY	HABITABLE STRUCTURE #
COUNTY BOUNDARY	GRID PAGE #

0 500 1,000
US Feet
1 inch = 500 US Feet